A black and white photograph of a cloudy sky over a dark, silhouetted horizon. The sky is filled with large, billowing clouds, some of which are brightly lit, suggesting a sun behind them. The horizon line is dark and jagged, representing a range of hills or mountains. The overall mood is dramatic and atmospheric.

**University
For
Man**

Summer 1978

Change & Renewal

Our brochure theme this semester is "change and renewal." Change has been a very intense part of our consciousness here at UFM of late. We have moved, been renovating, and making plans for a solar retrofit and an alternative technology museum. This is part of our commitment to helping create the kind of positive change that enhances the quality of life for individuals and improves the chances for the health and survival of us all.

In this time of rapid change, many find themselves fearfully with drawing to safer forms or feeling apathy or "burn-out." There is potential wisdom in our retreats. We need to get back in touch with our selves at times of stress. We need, too, to examine those things in familiar patterns that we wish to keep in the midst of change - the old baby and the bathwater routine. Herein lies the rationale for UFM's old-fashioned commitment to community, to the sense of belonging and mutually caring for one another. Finally, from developmental psychology, we know that periods of growth and risk are preceded, indeed made possible by, periods of security and integration. Even the old Yippie, Jerry Rubin has spoken of this as a "time of study, renewal, getting clear and developing skills."

But since change is inevitable, perhaps we can share ways to also open ourselves to the excitement of it, to its potentials, and in some cases to help it go in the directions we want it to go. It is crucial to see our reflectiveness as only part of the process. Education innovator, Herb Kohl, is perhaps on the vanguard of people who will integrate personal change processes and social change to the greater good of both. In his new book, *Half the House*, he reminds us that it is suicide to abandon commitment to personal and social growth and change. But Kohl is also aware of the prices of change and has outlined techniques he's tested for coping with it. He speaks of opening to

his personal anxiety about change, "going to a safe place and sitting with the pain." To be open to life, we must respect our pain and let it be. He advises us to use meditation and "centering" - to become quiet and aware of our bodies - to trust their wisdom and intuition. He suggests that we recreate the role of healer/shamans - those who can help us purge, identify and integrate our demons; and the role of fools - their upside-down vision can help us see, our laughter can help us accept. Both can help us recognize and embrace those hidden parts of ourselves and the paradoxes of our lives.

Kohl reminds us, as well, of the value of celebration, rituals, and stories. They release our emotions, affirm the values we share, and help us feel connected to our history and to others.

Finally, he echoes others in observing that changing our perspective on death is a helpful tool. Why? - because we die a bit every time we change. It is good to remember that "light and darkness, life and death...are inseparable. Because of this, neither is...life life nor death death..." (Gospel of Phillip)

Jane Fonda was helpful, too, in her recent reminder that there is nothing like feeling increased control of our lives to help us feel less panic about change. Researching how decisions are made in the community, gathering our own energy or growing our own food can help us feel that increased control.

It is interesting that UFM classes over the years have helped a number of us begin to learn any number of these coping and survival skills. And we can continue to learn. Though we will still grieve, feel anxious, and sometime impotent, we'll know that it's all part of the process. Join us, won't you, and we can support each other in opening to change.

Financial Friends

The individuals and businesses listed, through their contributions, are 'Financial Friends' of UFM. Other individuals and organizations have participated in our fundraising drive, but there are too many to list. We've thanked them all, and appreciate their gifts. Those listed have made substantial contributions. We would like to publicly acknowledge our appreciation. Next fall, UFM will have another recognition section. All contributions are tax-deductible. About \$8,000 has been raised, leaving \$11,500. Please help us with this one-time capital improvement drive. We would like to add your name to our brochure. Please send your check to the UFM Building Fund, 1221 Thurston, Manhattan, Kansas 66502. Thank you.

Individual (\$25 or more)

Alvin A. Hostetler
Bob Haines
Steve & Dorothy Bollman
Enell & Bernd Foerster
Jack & Janet Ayres
Lloyd & Jean Hulbert
Albie Rasmussen
John & Bertha Maes
Jim Rhine
Dwight & Doris Nesmith
Grant & Miriam Poole
Mont Green, Jr.
Mr. & Mrs. Orin D. Bell
Yu-Lee Lee
Terry Ray

Cecil & Dorothy Miller
David & Dorothy Danskin
Patrick Kennedy
Lydia Kesner
Page & Nancy Twiss
Cheryln Granrose
Joan McNeil
Sherman Hanna
Wendell & Vesta Joy Kerr
The Caroline Peine Family
William & Wanda Fately
Ernst Horber
Sam & Yvonne Lacy
Anonymous

John & Judy Exdell
Richard J. Harris
Tony & Julie Jurich
Mr. & Mrs. Frank Keller
Katherine Meyer
C.R. Anderson
Edith & G.M. Stunkel
Dean Zollman and
Jackie Spears
William & Linda Richter
Ralph & Mary Ellen Titus
Mr. & Mrs. Charles McCrann
Doris Grosh
Wayne & Rea Lou Rohrer

Business (\$100 or more)

McCall Pattern Co. Employees
Norton Simon Inc.
Social Responsibility Fund
Steel and Pipe Supply Co.
Charlson and Wilson
Union National Bank & Trust
The Manhattan Mercury
Robert A. Sesler
State Farm Insurance
Travel Unlimited
Kansas Lumber Company
Kansas State Bank
First National Bank
Anonymous

Who We Are

Again we welcome you to our offerings of the summer and hope that you will find herein something special just for you. The variety of courses and projects reflect the broad range of interests, hopes and dreams of those of us who work here. We want to re-emphasize our reliance on hundreds of volunteers who help us in many ways throughout the year. Without these good folks, UFM would not exist-and we appreciate their efforts enormously. UFM receives funds from the KSU Division of Continuing Education, the KSU Student Governing Association, the United Way of Manhattan-Riley County, the Department of Human Resources-CETA, the Fund for the Improvement of Postsecondary Education, and Community Development-City of Manhattan. Because of these groups and the kind of people who contribute to UFM as a tax exempt non-profit group, we are alive and well. To all, we extend our warmest thanks.

STAFF

Dave Ayers
Lisa Barnes
Nadine Burch
Julie Coates
Lou Douglas
Bill Draves
Jan Eddy
Jean Goldman
Tom Hollinberger

Teena Hosey
Jim Killackey
Cathy MacRunnels
Sue Maes
Pat Murphy
Crystal O'Briant
Joe Rippetoe
Melody Williams
George Sellens

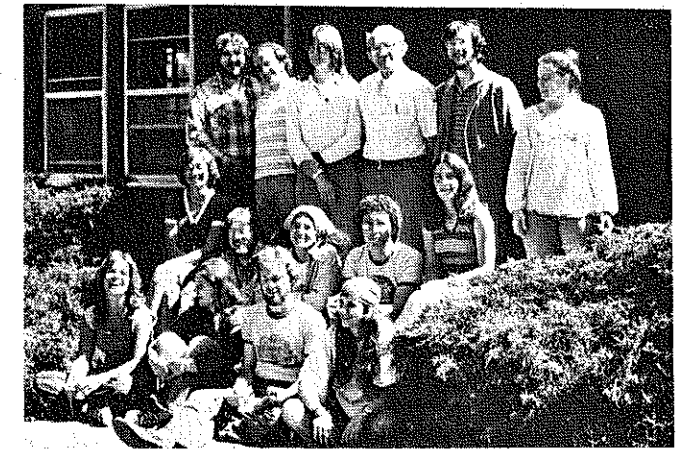
New Faces

It is a pleasure, as always, to welcome new staff to UFM. Tom Hollinberger, an architecture student at K-State has joined the campus/community staff, and in addition to other duties, he will help in the development of our appropriate technology programs. Crystal O'Brient, a recent Manhattan High School graduate will be with us through the summer and help with our bookkeeping operations. Jan Eddy and Pat Murphy, both seniors in recreation, are spending the summer with us as interns. Jan developed the "Play" programs in the brochure and Pat worked with Nadine Burch on the aging series.

Cheryl Heying, who was on staff as a recreation intern last semester, has moved to Iowa City, Iowa where she is pursuing her interest in theater with a summer stock company. Cheryl brought lots of sunshine to us, and we wish her luck in her new home.

Community Gardens

Gardening has many benefits. The foremost in this age of costly food is that of saving money and having nutritious, fresh produce. The Manhattan-UFM Community Gardens are located in the 800 block of Riley Lane. Approximately two acres are rented out in sections for a nominal fee based on size and family income. Through gardening with others at the community gardens, you may learn various gardening practices, techniques and meet fellow Manhattanites.



Solar Centers

A solar demonstration center is being planned as a compliment to University for Man's new home. Thanks to the interest of the KSU College of Architecture and Design, Gary Coates, a professor in the Department of Architecture has been funded for a month's research time to investigate the possibility of grant support for this solar project.

As future grants unfold, the project will develop in the following stages:

Summer '78: "Windows"--Thermal curtains and window-box collectors will be designed, tested, and demonstrated on the UFM building.

A Solar Information Resource Center will be created which will include displays, literature, slide shows, and materials.

A Solar Residential Retrofit Study for community homes will be undertaken.

Summer '79: A solar greenhouse workshop facility will be designed and built to the west of the present UFM Facility.

Summer '80: The UFM house will be retrofitted with a large collector to meet, at the minimum, 30% of the building's heating needs.

Evening Childcare

The Evening Childcare Program is currently operating from 6pm to 10:30pm at 503 N. 6th Street. Low-income working parents or parents involved in educational programs are eligible to use the center. Other applicants are considered on a case-by-case basis.

Funds to expand the program hours to 2:30pm to 11:30pm have been requested. If these funds are approved expansion will take place in August, 1978. Call UFM (532-5866) for application information.

Community

For questions about Community,
call Dave Ayers
at 532-5866.

COMMUNITY ORGANIZATIONS

Following is a list of local groups serving the Manhattan community. If you are interested in becoming actively involved in any of these groups please call the listed phone number for more information.

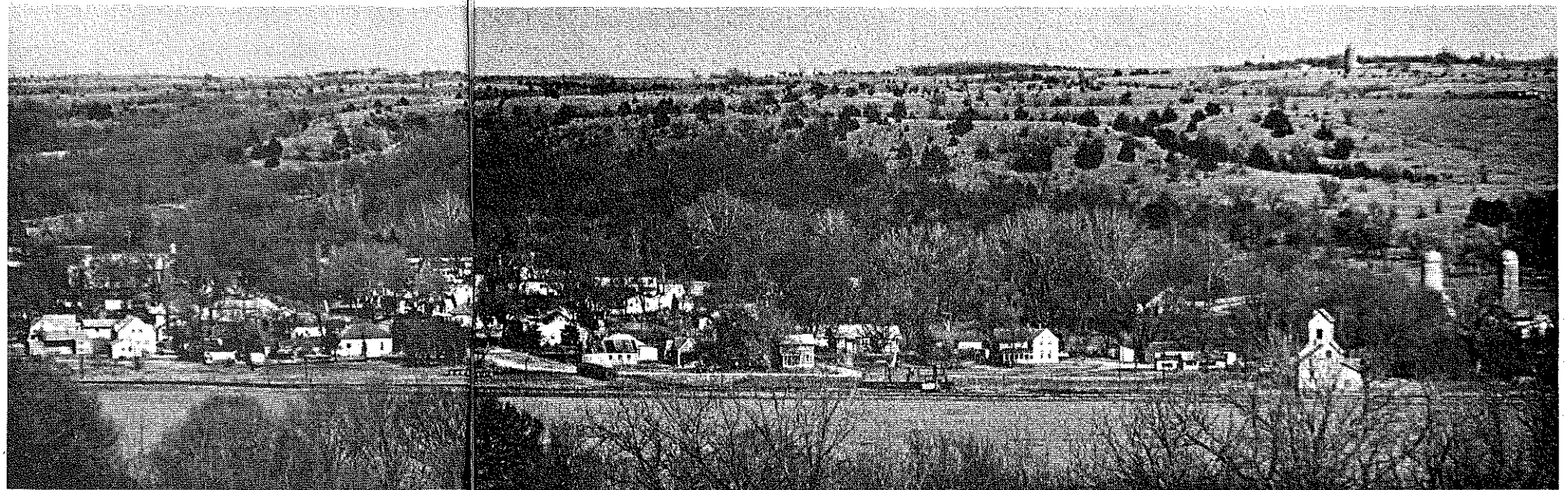
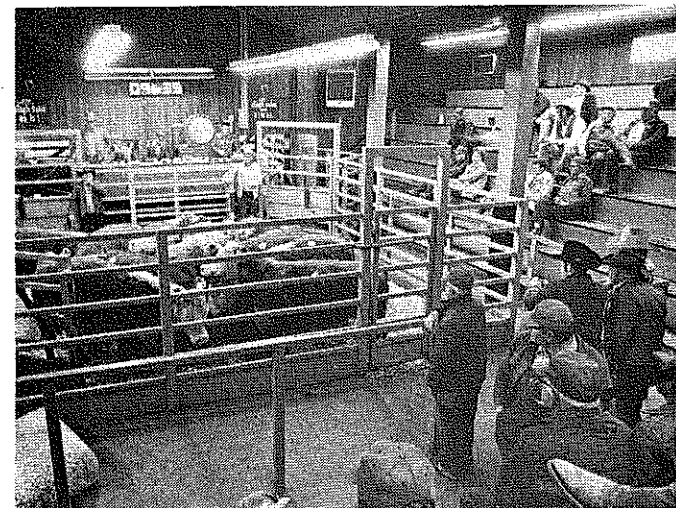
Toastmasters 537-8524	Girl Scouts 539-5576
Toastmistress 532-6883	Sudden Infant
La Leche League 776-7613	Death Syndrome 456-2707
Manhattan Singles Club 537-1176	

PLANNING A WORLD HUNGER CONFERENCE

Dwight Wiebe, Crop UFM	532-5735 532-5866
------------------------	----------------------

Mondays, 7:30pm
First meeting: July 31, Aug 14
Length: 2 times
Location: UFM Fireplace Room
1221 Thurston

Experts say that each year 15 million die from starvation, yet there is enough land to feed all who live on this earth. This fall, a day will be set aside to explore this world situation. A "World Hunger Conference", scheduled for September 23 at KSU, is now in the planning stages. The conference, sponsored by a host of organizations in Kansas, will focus on 1) Lifestyles throughout the world 2) Nutrition as it effects world hunger 3) The geography of world hunger 4) Politics and technology throughout the hungry world. People interested in participating are urged to join this action group with the July 31st and August 14th meetings.



OLDER MANHATTAN NEIGHBORHOODS ASSOCIATION

	539-9239
	539-6076

Thursdays, 7:30pm
First meeting: June 29
Length: Continuing
Location: First Presbyterian Church
8th and Leavenworth

OMNA has been described as Manhattan's urban pioneers. We are dedicated to the preservation and enhancement of the older areas of the city as a sound residential and commercial community. OMNA committees are looking into zoning and planning, neighborhood assistance, real estate practices, streets and transportation and historical preservation. We meet on the last Thursday of the month. Come join us at our next meeting.

The times, they are a-changin'.
Bob Dylan

ECONOMIC DEMOCRACY

Dave Ayers Lynn Fly	532-5866
------------------------	----------

Wednesdays, 7:30pm
First meeting: June 28
Length: Indefinite
Location: 1014 Kearney

The most enduring, coordinated, and generic manager of power is the corporate institution. Controlling great wealth and metabolized by the most tangible factor, the dollar, the modern corporation continues to gain control over the lives of people in this nation and throughout the world. Over the summer, we will explore different books and periodicals that deal with the ever emerging conglomerate and examine different means of communicating this information with the public.
(Lynn and Dave hope to create an ongoing group concerned with Economic Democracy.)

Outreach Programs of the Land Grant Universities: Which Publics Should They Serve?

The conference "Outreach Programs of the Land Grant University: Which Publics Should they Serve?" is designed to bring Kansans who are actual and potential clients of Land Grant outreach programs together with extension workers, research scientists and humanists to explore, discuss and evaluate values and policies of the Land Grant System.

The play, "The Kansas Character" written by KSU playwright Norman Fedder provides the tone for the conference. The play highlights the agrarian radical and the agrarian fundamentalist traditions which still lie with each other in determination of agricultural and Land Grant policy. The keynote speaker is Prof. Harold Breimyer, Agricultural Economist from the University of Missouri. Prof. Breimyer's work has been centered on the implications of corporate vs. family farm dominated agriculture. Luncheon speaker, Prof. William Friedland of the University of California at Santa Cruz, has recently been involved in research concerning the impact of the Land Grant research on people and communities. His concerns with issues on this topic have led him to publish an article on the social impact of the mechanical tomato picker and to do an extensive study on the life of the migrant workers on both coasts. Other sessions will deal with agricultural research and how it serves, the human element in extension programs, innovative ways of achieving rural development, and whether the Land Grant System has fulfilled the historic mandate of the Morrill Act. Time will be available for members of the audience to ask questions, and dialogue with the persons on the program.

The conference is being sponsored by the Colloquium on Alternatives for Human Survival, with support from University for Man, Kansas CROP, the World Hunger Consortium of the Consultation of Cooperating Churches in Kansas and the Kansas Baptist Convention.

It is funded through a grant from the Kansas Committee for the Humanities. For more information contact Tommy Garnett or Jan Flora at the Population Research Laboratory, Kansas State University, Manhattan, Kansas 66506 (913) 532-5984.

CONFERENCE DATES: JULY 14-15, KSU, Manhattan

July 14, FRIDAY

8:30 am	Registration-Forum Hall, Kansas State University
9:15 am	Keynote Address. "The Land Grant University: Which Publics Should It Serve?" Harold F. Breimyer, Agricultural Economics and Extension, University of Missouri.
10:30am	"What is the Mission of the Land Grant University?" (a panel discussion)
12:15pm	Luncheon. KSU Ballroom. "Social Science and Humanistic Considerations in Agricultural Research" William Friedland, University of California, Santa Cruz.
2:00 pm	"Agricultural Research - Who Does and Should it Serve?" (a panel discussion)
4:15 pm	Speakout. Audience participation.
6:15 pm	Dinner - KSU Ballroom
7:30 pm	Forum Hall - "The Kansas Character" a play presented by the Kansas Heritage Theater, written by Norman Fedder.

July 15, SATURDAY

8:30 am	Williams Auditorium, Umberger Hall, KSU "The Human Element in Extension Programs" (a panel discussion)
10:30 am	Break
10:45 am	"Beyond the Land Grant Campus: Liberal Education and Rural Development" (a panel discussion)
1:00 pm	Adjournment

MANHATTAN WOMEN'S POLITICAL CAUCUS

Linda Richter 539-6202
Neal Flora 539-5800/532-5984
Thursday, 7:30pm
One time, June 22
Location: 710 Lee

There is a need in our community to organize on local and statewide issues that are of a concern to women. We will focus on the 1979 legislative session and explore possible ways to become an effective lobbying force in our community. If you are interested in participating in a phone chain concerned with women's issues and cannot attend the meeting please contact Neal or Linda.
(Linda and Neal have written on and participated in women's political issues.)

The future is not a gift; it is an achievement. Every generation helps make its own future. This is the essential challenge of the present.
Robert E. Kennedy

GRASSROOTS POLITICS

Vince Gillespie 539-2903
Tuesdays, 7:30pm
First meeting: June 20
Length: 2 times
Location: K-State Bank Building Basement
1010 Westloop

The effects of a well organized grassroots political movement can be influential and in some cases victorious. We will examine community assessment, special interest groups, fundraising, neighborhood organization, voter registration, and other strategical tactics that are important in the formulation of a responsive political action group.
(Vince has been involved in the political process for twenty years.)



METHODS OF POLITICAL POLLING

Shanto Iyengar 532-6832
Wednesdays, 7-9pm
First meeting: July 5
Length: 4 times
Location: UFM Conference Room
1221 Thurston

A great deal of planning needs to take place in order to prepare an accurate and in-depth survey of any political issue. We will study methods of survey research, the different types of samples that can be used in a poll, the design of the questionnaire and the interviewing techniques, the coding of responses, and the analysis and the interpretation of the results. The computer will also be used to store and tabulate the poll data.
(Shanto has taught research methods and public opinion at KSU since 1972 and has published various articles on research methodology.)

EXPLORING A GAY LIFESTYLE: A FORUM

Thursdays, 8pm
First meeting: June 29
Length: 2 times
Location: UFM Fireplace Room
1221 Thurston

For a long time, the American people have feared the homosexual lifestyles. With the constant controversy concerning gay rights in the U.S. today, this forum of local ministers and community members will discuss homosexuality and interpersonal relationships in our society.

If we can create living networks of the diversely gifted and the diversely trained whose concern it is to safeguard our present heritage and to learn from and teach those who will be the carriers of this heritage, we shall automatically focus our inventiveness on the very center of the evolutionary process.
Margaret Mead

NAACP FILM SERIES

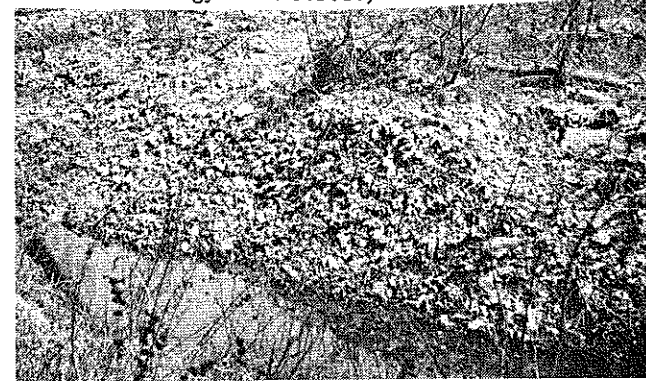
The following film series is sponsored by the local chapter of the NAACP and will show what is happening today with race relations. All films, courtesy of the Kansas Commission of Civil Rights, will be shown Fridays, 7:30pm at the Douglass Community Center Annex, 901 Yuma. Discussions will follow the showing of the films. For more information contact James Butler at 537-2237.

- June 9 "A Time for Burning"
This is an 'on the spot' documentary of the division of a white church over a proposal to exchange visits with a black church.
- July 14 "Burden of Truth"
This is a hard hitting, soul searching study of racial discrimination that draws no conclusions, but does expose the dark areas still needing the light of understanding and truth.
- Aug 11 "The Black Cop"
This will show the pressures that bear upon the black policeman.

AGING: AREN'T WE ALL

Nancy Lerner 776-7178
776-7373
Section I: Thursday July 20 7-9pm
Location: Carlson Plaza
415 Pierre
Section II: Thursday July 28 7-9pm
Location: Apartment Towers
300 N. 5th
Limit: 20 each section

This course will give an overview of the aging process and discuss the role of the older person in the "Pepsi Generation". We will also cover some of the issues that concern older people such as retirement, widowhood, and leisure. The course will be geared to everyone who is interested in the aging process because we are all aging.
(Nancy is the Aging Specialist at the North Central Kansas Guidance Center and has a master's degree in Gerontology from U.S.C.)



BLACK HISTORY IN THE AFTERNOON

Ken Lewallen 532-6730
Thursdays, 1:30-3:30pm
First meeting: June 22
Length: 3 times
Location: 901 Yuma
Section II: Friday July 7 7pm
Location: Apartment Towers
300 N. 5th

This games class will give you a chance to learn a game or play an old game you already know. Games that will be offered include backgammon, pitch, croquet, checkers, chess, shuffleboard, dominoes, scrabble, rummy, and horseshoes. Come and have fun.
(Pat is working with the UFM's aging program for this summer.)



INTRODUCTION TO GENEALOGY

Elaine Olney 539-4512
Tuesdays, 7:30pm
Length: 2 times
First meeting: July 11
Location: KSU, Eisenhower Hall, Rm 226

This class will be a beginners course in compiling a family history. It will include basic procedures for collecting and recording family data. The importance and availability of public records will be discussed. These will include: census, vital statistics, probate, land, and military records. There will be genealogy sheets for sale at the class.
(Elaine is the Riley County Genealogical Society President.)

ESTATE PLANNING

Harry Longbottom 776-3777
Tuesday, 7:30pm
One time, July 11
Location: KSU, Union, Rm 205b
Limit: 30

The estate laws of Kansas are complicated issues, but one in which a great deal of advantages can be gained by an individual if they allow the estate laws to work for them. We will explore estate planning in regard to the distribution of assets, gifts, preparation of a will, trusts, and 'dying without a will'.
(Harry is a general practitioner in the Manhattan area.)

SING ALONG WITH FRANK

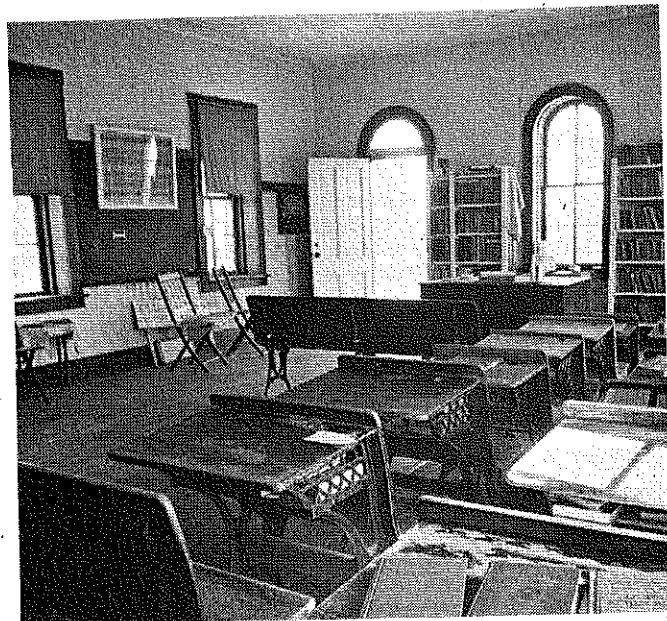
Frank Anneberg 537-9564
Section I: Wednesday July 19 7pm
Location: Apartment Towers
300 N. 5th
Section II: Friday June 30 7pm
Location: Douglass Community Center
901 Yuma
Section III: Tuesday July 25 7pm
Location: Carlson Plaza
415 Pierre

This will be fun. Frank is enthusiastic about leading the sing-a-long. Bring along a good spirit. Good voice quality is not a prerequisite.
(Frank was the Manhattan Recreation Director before retirement.)

A PET SHOW

Pat Murphy 532-5866
Monday, 7-8:30pm
One time, July 10
Location: UFM Courtyard
1221 Thurston

Many people have pets that are very dear to them and now is the chance to show them off. Prizes will be awarded to the ugliest, best groomed, friendliest, and best behaved pet. Bring your pet to the UFM Courtyard at 1221 Thurston and you may win !!!
(Pat is an eager and innovative recreation intern with UFM.)



Find out what kind of world you want to live in, what you are good at, and what to work at to build that world. What do you need to know? Demand that your teachers teach you that.
Peter Kropotkin

WANT TO WORK WITH CHILDREN IN AN OPEN CLASSROOM?
THE VOLUNTEERS FOR THE LEARNING SCHOOL!
movement can be influential and in some cases victorious. We will examine community assessment, special interest groups, fundraising, neighborhood organization, voter registration, and other strategic tactics that are important in the formulation of a responsive political action group. (Vince has been involved in the political process for twenty years.)



ETHOS OF POLITICAL POLLING

Shanto Iyengar 532-6832
Wednesdays, 7-9pm
First meeting: July 5
Length: 4 times
Location: UFM Conference Room
1221 Thurston

A great deal of planning needs to take place in order to prepare an accurate and in-depth survey of any political issue. We will study methods of survey research, the different types of samples that can be used in a poll, the design of the questionnaire and the interviewing techniques, the coding of responses, and the analysis and the interpretation of the results. The computer will also be used to store and tabulate the poll data. Shanto has taught research methods and public opinion at KSU since 1972 and has published various articles on research methodology.

BIG BROTHERS/BIG SISTERS

Dick Smith 776-9575
Mike Dikeman 776-7315
Tuesday, 7-9pm
One time, June 13
Location: KSU, Union, 212

When raising a child alone - from the divorce or separation which divides a family or the loss of a parent by death - it is the child who suffers the most. Children in such circumstances require the utmost in love, understanding and sound guidance. If you are 18 years of age, mature, married or single, and able to give at least a one-year commitment to a child in such a situation, we would like to hear from you. Just attend one of the orientation meetings and it will give everyone a chance to get acquainted. The need is great. Helping a child along the road of life is a unique experience. (Dick and Mike are involved in the local program.)

I,
g,
ti
p
hi
oi

NAACP FILM SERIES

The following film series is sponsored by the local chapter of the NAACP and will show what is happening today with race relations. All films, courtesy of the Kansas Commission of Civil Rights, will be shown Fridays, 7:30pm at the Douglass Community Center Annex, 901 Yuma. Discussions will follow the showing of the films. For more information contact James Butler at 537-2237.

- June 9 "A Time for Burning"
This is an 'on the spot' documentary of the division of a white church over a proposal to exchange visits with a black church.
- July 14 "Burden of Truth"
This is a hard hitting, soul searching study of racial discrimination that draws no conclusions, but does expose the dark areas still needing the light of understanding and truth.
- Aug 11 "The Black Cop"
This will show the pressures that bear upon the black policeman.

AGING: AREN'T WE ALL

Nancy Lerner 776-7178
776-7373
Section I: Thursday July 20 7-9pm
Location: Carlson Plaza
415 Pierre
Section II: Thursday July 28 7-9pm
Location: Apartment Towers
300 N. 5th
Limit: 20 each section

This course will give an overview of the aging process and discuss the role of the older person in the "Pepsi Generation". We will also cover some of the issues that concern older people such as retirement, widowhood, and leisure. The course will be geared to everyone who is interested in the aging process because we are all aging. (Nancy is the Aging Specialist at the North Central Kansas Guidance Center and has a master's degree in Gerontology from U.S.C.)

CREATIVE WRITING

Ruby Barclay
Helene Olsen 539-3894
Tuesdays, 7pm
First meeting: June 27
Length: Indefinite
Location: Apartment Towers
300 N. 5th

Your life is unique! This class will enable you to record the events of your life that will be of interest to your grandchildren and others. You are living history and many events in your life should be recorded - Here's your chance! (Helene and Ruby are both members of the Kansas Author's Club.)

FUN AND GAMES

Pat Murphy 532-5866
Section I: Wednesday July 5 7pm
Location: Douglass Community Center
901 Yuma
Section II: Friday July 7 7pm
Location: Apartment Towers
300 N. 5th

This games class will give you a chance to learn a game or play an old game you already know. Games that will be offered include backgammon, pitch, croquet, checkers, chess, shuffleboard, dominoes, scrabble, rummy, and horseshoes. Come and have fun. (Pat is working with the UFM's aging program for this summer.)



CONSUMER FRAUD - PROTECT YOURSELF

Cathy Butts 776-9294
Wednesday, 1pm
One time, July 12
Location: Douglass Community Center
901 Yuma

The elderly are the most frequent victim of the con artist according to the Attorney General's most recent report. What is the con artist's pitch? What protection does the law offer? How can you protect yourself? (Cathy is the director of Consumer Assistance and Information in Manhattan.)

LOOK YOUR BEST AT ANY AGE

John Ruth 537-9636
Louise Sills 539-8012
Section I: Wednesday June 28 9am
Location: Apartment Towers
300 N. 5th
Section II: Wednesday June 28 1pm
Location: Douglass Community Center
901 Yuma

Hair styles and clothing can flatter you and make you attractive even though your figure and coloring have changed through the years. Appropriate hair and clothing styles, colors, fabrics, fashions, skin care, product knowledge, and garment care for men and women will be shown and discussed. (Louise is a beautician and John is the manager of a local retail clothing store.)

SING ALONG WITH FRANK

Frank Anneberg 537-9564
Section I: Wednesday July 19 7pm
Location: Apartment Towers
300 N. 5th
Section II: Friday June 30 7pm
Location: Douglass Community Center
901 Yuma
Section III: Tuesday July 25 7pm
Location: Carlson Plaza
415 Pierre

This will be fun. Frank is enthusiastic about leading the sing-a-long. Bring along a good spirit. Good voice quality is not a prerequisite. (Frank was the Manhattan Recreation Director before retirement.)

A PET SHOW

Pat Murphy 532-5866
Monday, 7-8:30pm
One time, July 10
Location: UFM Courtyard
1221 Thurston

Many people have pets that are very dear to them and now is the chance to show them off. Prizes will be awarded to the ugliest, best groomed, friendliest, and best behaved pet. Bring your pet to the UFM Courtyard at 1221 Thurston and you may win !!! (Pat is an eager and innovative recreation intern with UFM.)

Crafts

**For questions about Crafts,
call Jean Goldman
at 532-5866.**

UFM FINE ARTS/CRAFTS FAIR: SUMMER!!!

Jean Goldman 532-5866
Irene Levy 532-5866

Saturday, 10am-6pm
One time, July 8
Location: UFM
1221 Thurston
Materials fee: \$2.00 pay at registration

Since the other UFM fairs were so successful and a lot of fun, we've decided to do it again! A day of arts, crafts, refreshments, and music. Interested artists and crafts persons please sign up at registration, and indicate your preference for an indoor or outdoor spot. UFM is asking for a \$2.00 entry fee to cover publicity costs, and a 10% commission on sales to help our building fund. (Jean and Irene have coordinated and participated in the UFM craft sales in the past.)

CRAFTS FOR KIDS

Rosann Wilkerson 776-5461
Section I: Saturdays 3pm June 24, July 1 & 8
Section II: Saturdays (time will be decided at the first meeting)

Location: Tom's Hobby Shop
716 N. Manhattan Ave.
Limit: 8 each section

Section I features "Fuzzy the Owl", and is designed for the very beginner in macrame. Section II is a children's beginning tole and decorative painting class. You will learn the basic skills while doing a project. The costs will vary depending upon the materials you wish to use. Participants in both sections are to attend the introductory meeting on June 24.

(Rosann is active in all kinds of crafts. She runs "Tom's Hobby and Craft Shop" with her husband.)

BEGINNING EMBROIDERY

Georgia Nonte 537-1759
Wednesdays, 7-9pm
First meeting: June 21
Length: 2 times
Location: Redbud Estates, Lot 369
Limit: 5

I will teach 5 basic embroidery stitches to start with. For the first class you will need needle, embroidery floss, approximately a 9 inch square piece of light cloth, and an embroidery hoop, if you prefer to use one.
(Georgia has been embroidering for 20 years.)



CROCHETING FOR BEGINNERS

Thelma McCurdy 539-1770
Wednesdays, 7pm
First meeting: June 21
Length: 4 times
Location: 1st Congregational Church, basement
700 Poyntz
Limit: 10

You can produce an infinite variety of beautiful items when you learn to crochet! A good material for beginners is 4 ply yarn in a 4 ounce skein. Bring this and a "J" hook to the first meeting. (Thelma has been crocheting since 1948. She has made many items, including coats and shawls.)

INTRODUCTION TO NEEDLEWORK

Mary Davis 537-1439
Tuesdays, 7:30pm
First meeting: June 20
Length: 8 sessions
Location: 1120 Thurston
Limit: 8
Materials fee: \$3.00, pay at class

This class is designed as an introduction to some of the various types of needlecraft: cross-stitch, embroidery, needlepoint, applique, fagoting, cut-work, monogramming, etc. It should be enjoyable for beginners as well as those people with experience. (Mary grew up sewing and embroidering.)

BEGINNING MACRAME

Jan O'Briant 537-9660
Crystal O'Briant
Tuesdays, 7-9pm
First meeting: June 20
Length: Semester
Location: UFM Banquet Room
1221 Thurston
Limit: 10

The first projects will include a simple wall hanging and a plant hanger, so that the basic knots may be learned. Then, according to group interest we'll choose other forms to try. Bring a ball of 4 ply jute to the first meeting. (Jan says that by doing macrame many beautiful objects are provided for her home and it has also helped her with stiff shoulders and joints.)

BEGINNING SEWING

Marlys Nevins 776-9721
Tuesdays and Wednesdays, 7-9pm
First meeting: June 20
Length: 6 times
Location: Douglass Center Annex
Frederick Douglass Room
901 Yuma
Limit: 8

The first meeting will be an introduction to find out what you'd like to make! There will be individual instruction so that you can work and progress at your own level and speed.
(Marlys is a graduate in Fashion Design from K-State. She is an experienced seamstress.)

TATTING: THE ART OF MAKING LACE

Effie Edwards 776-7975
Session I: Wednesdays, 2pm, June 21, 28
Session II: Wednesdays, 2pm, July 5, 12
Length: 2 times
Location: 425 Pierre #5-K
Limit: 3

Dress up summer clothes with beautiful handmade lace, or make pendants, tablecloths, and any number of items! Come to class with a shuttle and your string. Effie recommends ordinary string (as used to tie packages) for learning and then moving to the finer tating string. Please indicate at registration whether you are signing up for the first or the second session! If you are on the waiting list you will be contacted later in the semester. (Effie has taught tating to many people. She has been tating for 75 years.)

QUILTING

Nancy Griffin 1-485-2762
Wednesday, 7-9pm
One time, June 21
Location: Manhattan Public Library
Juliette and Poyntz
Limit: 25

Working with fabric is an exciting experience leading to endless invention made possible by many fabrics, threads, and inventive stitches. Emphasis in this class will be on quilting and on one's own ability to create original and personal forms. The means, processes, and resources are given - the rest is imagination.
(Nancy is a self-taught quilter who uses her creativity to turn out beautiful and unusual items.)

HAMMOCK WEAVING

Joan Werner 537-7902
Tuesday, 7pm
One time, June 20
Location: Manhattan Public Library
Juliette and Poyntz
Materials fee: \$.50 pay at registration

See a home woven hammock and go over instructions for weaving your own. This event includes discussion of purchasing materials, setting up a loom, weaving, assembling, and finally - lying in it. (Joan has woven two hammocks and has taught this course before.)

FUNDAMENTALS OF RUG WEAVING

Harold Noyce 537-0866
Tuesdays, 7:30pm
First meeting: June 20 - all together, then in pairs
Length: Indefinite
Location: 724 Moro

The class will meet for a general discussion of materials, preparation of material, etc. As weaving is a personal art rather than a class art, time of weaving will be determined by the members themselves. We hope that each one can make a rug of their own design and weaving. All people are asked to attend the meeting on Tuesday June 20!!! (Harold has been weaving rugs as a hobby for nearly 30 years. He tries to keep a few rugs for display and sale, made from various types of material and different patterns of weaving.)

NATURAL DYES WORKSHOP AND WEAVER'S FANCY

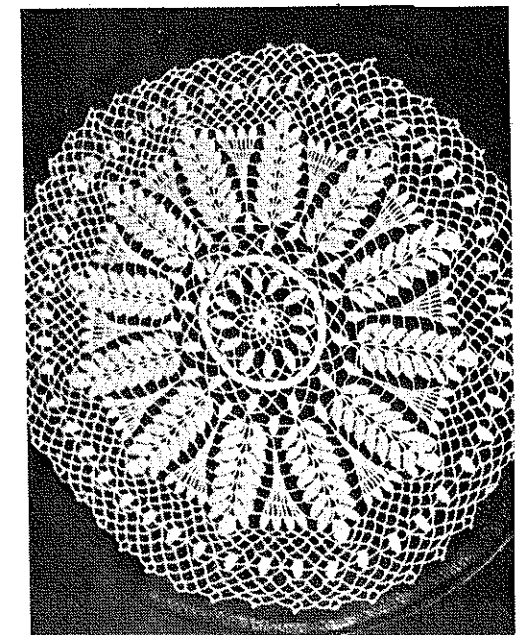
The Manhattan Weavers Guild
Susan Lala 537-9610

Saturday, 10am-4pm
One time, June 17
Location: Patty Mueller's
Riley, Kansas

Limit: 8
Materials fee: \$4, pay at registration

This is a "Weaver's Fancy" workshop. In a previous meeting yarn will have been 'mordanted' for you. At this meeting you will soak the yarn in tubs of dye, each dye having been made from a native plant. At the end of the day you will have seen what colors come from each plant, and will have a yarn sample of each to take home. Call Susan Lala for directions to Riley, and to find out what other natural dye substances are needed.

(Weaver's Fancy is a group of weavers who have been getting together to exchange ideas. They welcome new members. Their other meetings this summer are July 15 and August 19 at the Flint Hill Studio, Art Shop and Weaving Supplies, in Riley. Call Franja Bryant, 537-4649 for more information.)



SAND DRYING FLOWERS

Georgia Becker 537-1987

Wednesdays, 1pm
First meeting: June 21
Length: 2 times
Location: 1331 Pierre, backyard
Limit: 12

Bring a small box, can or cheese carton and join us for an hour or so of flower drying fun. I have been experimenting with this hobby for several years and have gotten some pretty neat results. Class will be cancelled if raining.
(Georgia uses dried flowers to make beautiful arrangements which she sells at crafts fairs.)

CANDLE - MAKING

Neil Schanker 537-7073

Tuesdays, 7pm
First meeting: June 27
Length: 2-3 times
Location: UFM Kitchen
1221 Thurston
Limit: 10

I have about 10 lbs. of paraffin and the basic equipment, but I just haven't got around to making candles. A candle can be creative art as well as functional, and I hope to try some offbeat methods. We'll split the small cost.
(Neil has made many sand candles in all kinds of weather.)

UFM CO-OPERATIVE POTTERY STUDIO

Jean Goldman - Crafts Co-ordinator 532-5866

Saturday, 9am
One time, June 17
Location: UFM Pottery Studio
1221 Thurston

Materials fee: \$15.00 pay at registration

UFM has a pottery studio with 2 wheels and a kiln in the basement at 1221 Thurston. You don't have to be enrolled in a class to use the studio. Costs are \$15 per semester for the use of the wheels, studio space, and some kiln space. If you are interested in using the facilities, you are asked to attend an introductory meeting June 17, to see how we operate and to go over the studio guidelines. Copies of these guidelines are also available now at the UFM house. As a cooperative participant you will do some of the maintenance work, such as making clay and cleaning. If you cannot attend the meeting please contact Jean for another time.

POTTERY FOR TWEENS (Ages 10-14)

Joan Failey 776-4267

Thursdays, 10:30am
First meeting: June 22
Length: 6 times
Location: UFM Pottery Studio
1221 Thurston

Limit: 6
Materials fee: \$6.00, pay at registration

The group will concentrate on handbuilt pottery. Last summer beautiful, imaginative sculptures and plaques were done in this class.
(Joan enjoys using clay, and she taught this class last summer.)



THROWING ON THE POTTERY WHEEL: DEMONSTRATION

Rex Carder 537-7007

Wednesdays, 7pm
First meeting: June 21
Length: 2 times
Location: KSU, West Stadium, Denison Ave
Rm 202
Limit: 8

If you are working in pottery on your own and would like some pointers, or if you simply would like to watch a master potter throw, then this is for you! Rex will demonstrate some techniques the first week. The second week you can come in to discuss any problems you might be having and/or for more advanced demonstrations.

(Rex has studied ceramics at K-State for 3 years and was a resident potter in Utah last summer. He plans to set up his own studio this fall when he graduates.)

PRIMITIVE POTTERY

Kevin Siek 537-1678

Saturdays, 1pm
First meeting: June 24
Length: 5 times
Location: UFM Pottery Studio
1221 Thurston

Limit: 25
Materials fee: \$2.00 pay at registration

This class will cover all aspects of primitive pottery. We will be digging our own clay and the pits for the firing and collecting the combustible materials. The first meeting will be an introduction to primitive pottery techniques and then we will proceed to the lake to dig clay and sand. Please indicate at registration if you have a truck or car that could be used.
(Kevin has been working in clay, doing sculpture/pottery at the UFM studio this year.)

CERAMICS: WORKING WITH CLAY!!!

Holly Bricked
Miriam Shaheed 537-8576

Tuesdays, 6pm
First meeting: June 20
Length: 5 times
Location: UFM Pottery Studio
1221 Thurston
Limit: 6
Materials fee: \$15.00, pay at registration
fee includes 10 lbs. of clay

We will cover the four methods of handling clay: pinch, coil, slab and wheel. We'll teach one method per meeting and after that you can work on your own. Basics in glazing will also be taught.
(Miriam and Holly have a lot of interest and experience in ceramics.)

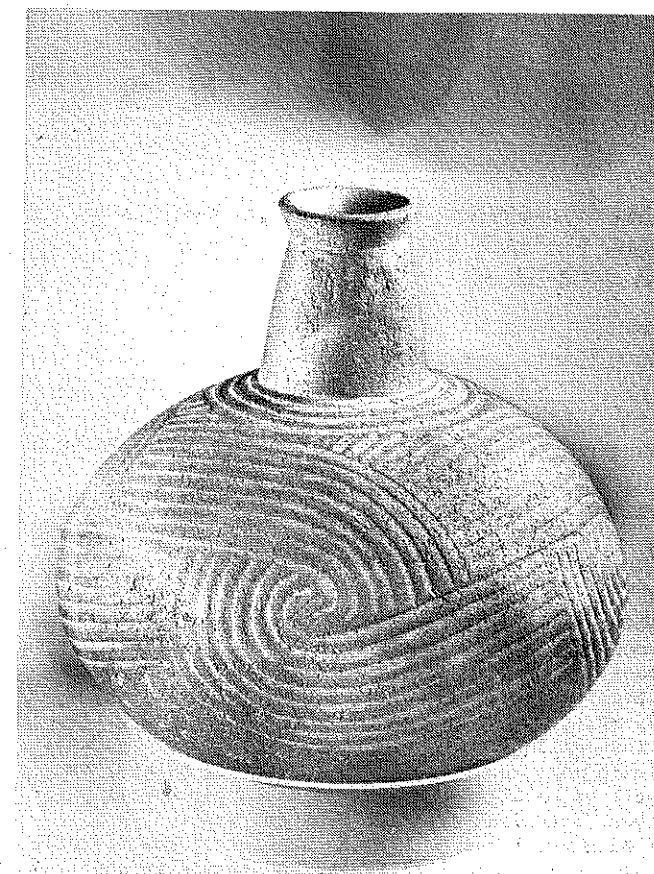
CREATIVE POTTERY: TECHNIQUES FOR WORKING WITH CLAY

Irene and Martin Levy

Mondays, 7:30-9pm
First meeting: June 19
Length: 6 times
Location: UFM Pottery Studio
1221 Thurston

Limit: 6
Materials fee: \$20.00, pay at registration
fee includes 25 lbs of clay

The course will cover various methods of creating with clay, such as slabs, coils, and the wheel. While handbuilding and decorating techniques will be stressed, wheel work, including several throwing demonstrations, will be available for anyone desiring instruction in this area. Instruction in glazing and glaze formulation will also be available for anyone interested in this aspect of ceramic art.
(Irene and Martin have been making pottery for over 6 years and taught 3 years at the State University of New York at Binghamton.)



KILN BUILDING FROM BRICKS TO BURNERS

Harold Moore 776-6904

Sundays, you will be contacted
First meeting: June 18
Length: Indefinite
Location: 618 Osage

We will take apart my old kiln, then proceed to put together a new one. You will actually learn about two different kilns - from all aspects! By the end of the class you'll know how to build a kiln of your own. At the first meeting we'll discuss times for the rest of the sessions. Wear old clothes and gloves.
(Harold is a very skillful potter in Manhattan who has built 10 kilns.)

HANDBUILDING WITH CLAY

Jean Goldman 532-5866

Mondays, 1-3pm
First meeting: June 26
Length: 5 times
Location: UFM Pottery Studio
1221 Thurston
Materials fee: \$15.00, pay at registration
fee includes 10 lbs of clay

Handbuilding is a way to be in close touch with your material. There are many ways to act upon the clay and watch it respond to your hands. At each of the sessions you will be introduced to a different method and experience in working with clay. People of all ages and levels of experience are welcome.
(Jean likes to make sculpture using these hand-building methods.)

Fine Arts

For questions about Fine Arts,
call Melody Williams
at 532-5866.

CARE, STORAGE AND DISPLAY OF KEEPSAKE CLOTHING AND TEXTILES

Margaret T. Ordonez 539-5010

Tuesday, July 18, 7-9pm
Thursday, July 20, 7-9pm
Length: 2 times
Location: KSU, Justin Hall, Rm 347
Limit: 35

This class is for people who are concerned about keeping old clothes, table linens, laces, etc., from past generations. Topics include conditions for proper storage, cleaning, repair, and display. Examples from historic costume and textile collections will be shown and discussed so that you will learn more about the clues for dating pieces, as well as be able to enjoy the aesthetic appeal of these beautiful articles from the past. (Margaret has a background which includes historic textiles, historic costumes, and chemistry and textiles. She has developed special expertise in the conservation of old clothing and textiles.)

HISTORY ON TOUR

Lois Morales 539-8867

Sunday, 10:30am - 7pm
One time, July 16
Location: 1200 Kearney
Materials fee: \$6.00 pay at registration

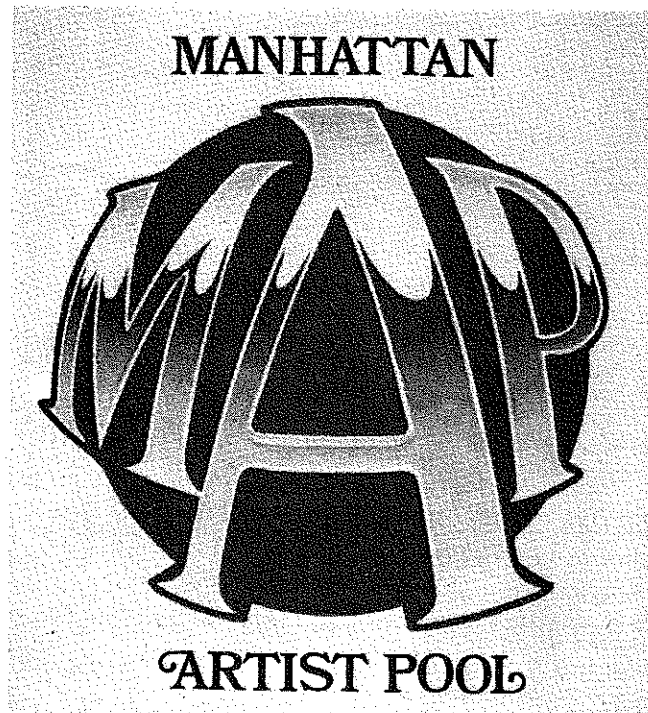
We will take a tour of the Council Grove area, beginning with dinner (11:30am) at the Hayes House. We will visit the Kaw Mission Museum, the old Seth Hays Home and antique stores. The fee is to reserve a meal at the Hayes House. Tour reminders will not be sent. (Lois has been teaching antiques for several years.)

SHARE IT WITH US - POETRY

Crystal O'Briant 537-9660
Christi Boyd 537-7627

Monday, 7-9pm
One time, July 10
Location: UFM Conference Room
1221 Thurston

Attention to all poetry collectors and writers! This class is for you. Crystal and Christi have been collecting and writing poetry for quite a while, and they would enjoy the opportunity to share their collections with you, so grab your poetry off the shelf and come share it with them. (Crystal and Christi write poetry, create clothes, and do wall hangings. They have many artistic interests between them.)



MANHATTAN ARTISTS' POOL

Floyd Gompf 776-1640
Fred Anderson

We are an informal, on-going group of artists who meet once a week to discuss ways to create community interest in the visual arts. Some of our goals are: to have an artists' job pool, to show work together, and to eventually create a permanent gallery. If you would like to join us, contact Floyd or Fred. (You can find Fred at Fred's Portraits, 1204 Moro.)

BEAUTY AND MADNESS - THE POETRY OF ANNE SEXTON AND SYLVIA PLATH

Edie Kirk 539-5613

Wednesdays, 7:30pm
First meeting: June 21
Length: 5 times
Location: 344 N. 16th St

These recent poets, both suicides, created poetic works that startle, move and fascinate their readers. Come join us as we discuss their poems, their lives, and the effect of their poetry on us. The meeting dates can be negotiated. (Edie has been reading the work of Anne Sexton and Sylvia Plath for several years.)

CALLIGRAPHY

Stephanie Rolley
Wednesdays, 7-9pm
First meeting: June 21
Length: 5 times
Location: KSU, Justin Hall, Rm 343
Limit: 15

Learn the art of beautiful writing. That classy looking printing that you see on invitations, diplomas and announcements is not hard to learn. Students should bring an italic script pen (medium or broad nib) to class. (Stephanie has had teaching and commercial experience in scripting over the past few years.)

SHARING ART WITH YOUR CHILDREN

Cindy Smith 776-6906
Janet Von Bevern 539-3337

Saturdays, 4-5:30pm
First meeting: June 24
Length: 2 times
Location: UFM Banquet Room
1221 Thurston
Limit: 10 families (parents with children)
Materials fee: \$2.00, pay at registration

This course shows a few inexpensive art projects that parents and children can do together, as well as sources that parents can consult for other ideas. No previous art experience is necessary. The main emphasis is on sharing creativity with your child(ren). When registering please indicate the number of parents and children attending.

(Janet is an art education senior at KSU. Cindy is a senior in Special Education. They both feel that parents need to expand their points of contact with their children.)

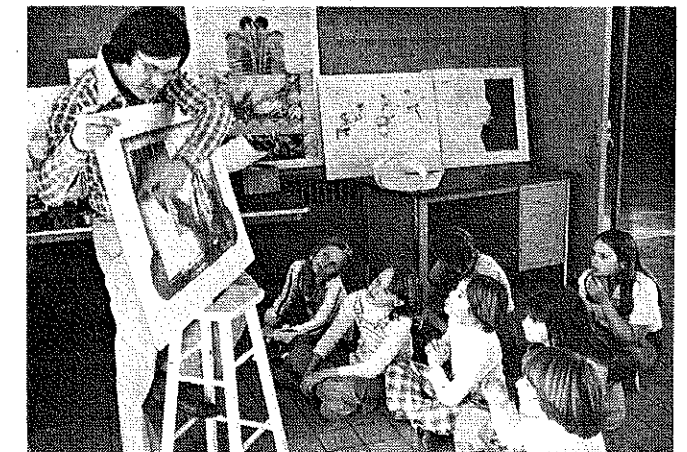
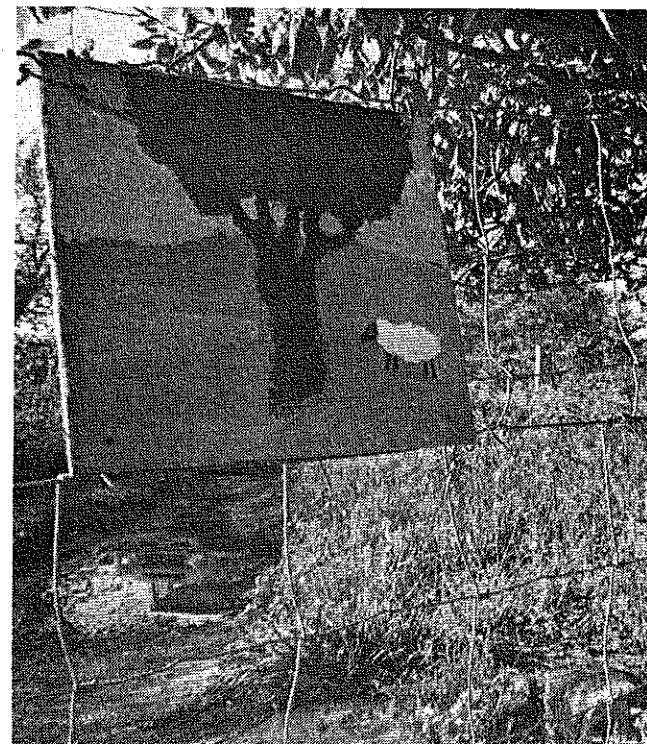
WATERCOLOR PAINTING

Steve Moser 537-9751

Saturdays, 9am-12noon
First meeting: June 24
Length: 6 times
Location: 3204 Highland Cr
Limit: 10

We will spend most of our time together painting (outside when the weather is nice). Hopefully we can develop beyond the initial frustrations to an appreciation and enjoyment for watercolor painting as a means of self expression. Beginners are welcome.

(Steve is a student at K-State and has been interested in watercolor painting, mainly landscapes, for about 4 years.)



ROSEMALING (NORWEGIAN PAINTING ON WOOD)

Dorothy Barfoot 539-3990

Wednesdays, 7-9pm
First meeting: June 21
Length: Indefinite
Location: 815 Sunset
Limit: 8

Part of the first meeting will be a discussion of what we will need to do for our paintings, and to look at rosemaled objects. I have been to Norway and seen the homes covered with designs from wall to ceiling! Everything got painted to fill those long cold winter evenings!! The art came to American with the Scandinavian settlers. In those days the roads weren't good and so each valley developed its own traditional designs. Please bring oil paints, brushes, and a rag to class. (Dorothy has studied rosemaling in Norway and in Illinois where she takes a class every summer.)

WOODWIND ENSEMBLE

Jim Shanteau 537-0526

Wednesdays, 7:30pm
Length: Indefinite
First meeting: June 21
Location: 1516 Wreath

All wind musicians who enjoy ensemble playing are welcome. We play music from baroque to modern. Some music is available, but participants are asked to share any music they have. We have occasionally performed in public.

(Jim has played several woodwind instruments for over 20 years, and has been involved in this group for 3 years.)

BEGINNING GUITAR WITH MIKE

Mike Quinn 537-2617

Wednesdays, 7:30pm
First meeting: June 21
Length: Indefinite
Location: 1006 Fremont Apt. 2
Limit: 10

As we learn a few chords, we'll use them in some songs. More chords and songs will be learned before we go on to the scales. This way you'll be playing and singing some popular tunes as you learn!! (Mike has played in Rock, Folk, Jazz, and Vocal Jazz bands.)

*Dreaming and creativity are the same
They keep us sane
We disintegrate when we don't dream...
Rollo May*

BEGINNING GUITAR WITH MEL

Mel Strait 532-6459

Tuesdays, 7pm
First meeting: June 20
Length: 6 times
Location: UFM Porch
1221 Thurston
Limit: 10

This is a class for the beginning guitarist. Basic chord structures, finger exercises and simple theory are included. You must bring your own guitar. (Mel has played guitar for 17 years.)

ADVANCED GUITAR

Don Shehan 539-4170
Tony Ridder 1-469-3331

Saturdays, 3:30pm
First meeting: June 24
Length: 4 times
Location: UFM Fireplace Room
1221 Thurston

This course will cover advanced techniques of country, bluegrass, advanced rock rhythm and rock lead. Principals, techniques and theory will be included. (All of the teachers are professional musicians.)

MAINTAIN YOUR MUSICAL INSTRUMENT

Chris Banner 776-6562

Saturday, 10am
One time, July 8
Location: 514 N. Juliette

Chris will demonstrate general preventive maintenance for your musical instrument. Please note that it is not the intent of this course to deal with the repairs of already broken instruments! Chris will cover techniques for replacing strings, cleaning, and polishing, as well as special needs and peculiarities of each instrument. Please indicate on your registration card what musical instrument you need to maintain.

(Chris has been an instrument repairman for three years and repairs all University instruments.)



THE ANCIENT ART OF BELLYDANCE

Yasha 776-4819
Barbara Smith 539-4021

Section I: Mondays 7:30pm June 19
Section II: Thursdays 6:15pm June 22
Section III: Thursdays 7:15pm June 22

Length: 7 times
Location: You will be contacted
Limit: 20 each section

Bellydance is excellent exercise and develops one's poise and self-concept. Sources of supplies, costumes, jewelry, records and books will be discussed. Please indicate on the enrollment card which section you wish to enroll in.

(Yasha and Barbara have performed and taught bellydance for UFM for several years.)

We have to trust the invisible guages we carry within us. We have to realize that a creative being lives within ourselves, whether we like it or not, and that we must get out of its way, for it will give us no peace until we do.

Mary Caroline Richards

BELLYDANCING IV

Nahid 539-5645

Mondays, 7pm
First meeting: June 19
Length: 7 times
Location: You will be contacted
Limit: 20

This class is for students with previous bellydance instruction. We will work on a group dance. (Nahid is also an experienced performer and teacher.)

PHOTOGRAPHERS SHARE

Charles Sargent home 539-3234
work 537-2261
ext. 339

Thursday, 7:30pm
One time, July 6
Location: KSU, Union, Rm 213

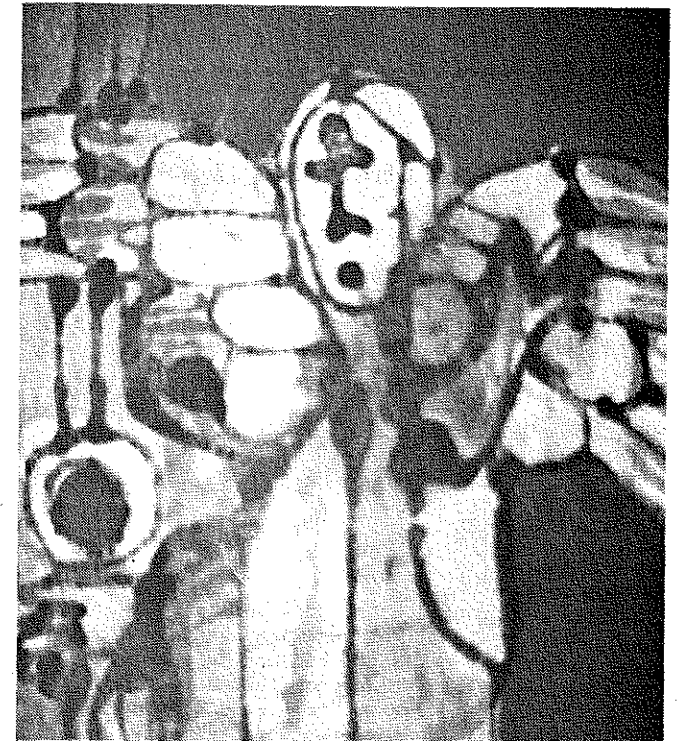
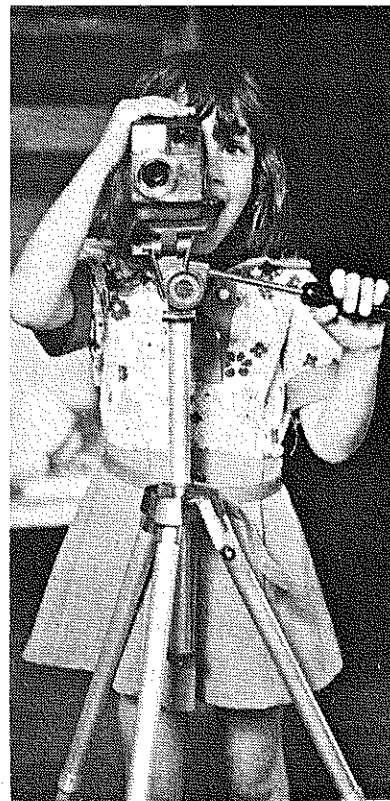
While beginners are welcome, this will not be a teacher-student format so much as a time for photographers to share what works for them on a practical basis in photography and developing. If there is a shared desire to become an ongoing group, plans will be laid for such an expansion. (Charles has been learning alot about photography for several years and feels he could really benefit from other photographers experiences as well.)

PHOTOGRAPHY

Howard P. Killough 776-6584

Tuesdays, 7:30pm
First meeting: June 20
Length: 4 times
Location: 234 Ridge Dr
Limit: 6

This course will include such topics as how the camera works, getting the picture, film developing, and printing. The course may be extended for those wanting work and information in special areas such as the use of filters, compositions, etc. Students will need a camera and film. (Howard has worked as a free-lance photographer and has taught a number of UFM courses.)



STAINED GLASS DEMONSTRATION

Ralph Flowers 539-3243

Section I: Monday, 7-9pm June 19
Section II: Wednesday 7-9pm June 21
Section III: Saturday 10am-12noon June 24
Length: One time
Location: to be announced at registration
Limit: 11 each section

Plans are to briefly cover the historical and contemporary trends of stained glass, and then to focus on the "how-to" nature of the medium. The latter will include design considerations, tools of the trade, types of glass, other supplies, and a demonstration of window construction using both the copper foil and leading technique. When you register please write which section you are signing up for, and ask for the location! (Ralph has worked in stained glass and has recently opened the Protean Glass Studio.)

UKRAINIAN EGG DECORATION

Elaine Cole 776-7615
Orysia Dawydiak 537-4221

Wednesdays, 9am
First meeting: August 2
Length: 2 times
Location: UFM Kitchen
1221 Thurston
Materials fee: \$1.00, pay at class

Join two egg enthusiasts, Orysia and Elaine, and learn the art of decorating eggs with intricate, beautiful, symbolic, designs. Orysia, a Ukranian, learned the art from her mother. Elaine was taught by a 79 year old Czech woman. Bring uncooked eggs, pencil, and a candle with a stand. (Elaine and Orysia have shared their skills with others through UFM before.)

*WHEN
ASKED WHETHER
OR NOT JAZZ WAS FOLK
MUSIC, LOUIS ARMSTRONG
REPLIED: "MAN, ALL MUSIC
IS FOLK MUSIC. DID YOU
EVER HEAR A HORSE
SING A SONG?"*

Earth

**For questions about Earth,
call Lisa Barnes
at 532-5866.**

HOW WOULD YOU LIKE TO WAKE UP TO A SUNDIAL?

Bill Fateley
Tuesday, 7pm
One time, June 20
Location: UMHE
1021 Denison

Have you ever wanted to build a sundial or to understand how one works? Working with sundials can be simple enough to match the budding talents of a twelve-year old; yet we know that sundials attracted the interests of such prodigies as Sir Issac Newton and Thomas Jefferson. Build a sundial to grace your garden and to find time in other cities or by moonlight. This class will cover the art and construction of sundials and also view the soon to be famous Manhattan alarm sundial. (Bill is head of the Chemistry Department and a collector of sundials nationally.)

CLIMBING IN KANSAS!

Alan Sink 539-5639
Wednesdays, 7:30pm
First meeting: July 26
Length: Indefinite
Location: UFM Banquet Room
1221 Thurston

Yes, it is possible to climb in Kansas -- on more than the Old Stadium and Library walls! This is a climbing exploration class -- exploring rock and ice climbing equipment, how to use it, and slides from various climbs ranging from Washington to Mexico, as well as Kansas. Also, for those interested, the possibilities of climbing in Kansas will be explored. This class is designed to get those interested in climbing together. (Alan has been climbing for five years and has taught other UFM classes.)

A TRIP THROUGH THE GRAND CANYON

Charlie and Nancy Griffin 1-485-2762
Wednesday, 7pm
One time, June 28
Location: UFM Banquet Room
1221 Thurston
Limit: 30

Have a seat and take a tour of the magnificent Grand Canyon. Four years of backpacking will be presented through a slide show travelogue. (Nancy and Charlie are annual backpackers of the Grand Canyon.)

*When your spirit cries for peace
Come to a world of canyons -- deep in an old land.
Feel the exultation of high plateaus
the strength of moving waters,
the simplicity of sand,
and the silence of growth.*



BUYING COUNTRY PROPERTY

Jim Goss 537-7005
Friday, 7:30pm
One time, June 30
Location: 1st National Bank Basement

This course is designed to help the person who wants to buy property in the country, determine why s/he wants to buy and what can be bought, whether it be for investment, country living, recreation, aesthetic or other reasons. (Jim is an author who has traveled extensively, and for the past 2½ years has been a real estate salesman selling land, farms and ranches.)

INDEPENDENCE WITH THE LAND

Harold Klaassen 539-2575
Thursday, 7pm
One time, July 6
Location: 1st Presbyterian Church
801 Leavenworth

In our present day society there is no way to be completely self-reliant, but we can work toward independence. This group will discuss how to develop a small piece of land to meet a diversity of needs. Topics included will be: pond ecology for raising fish, small animal production, wood lot management for fuel, and orchards and vegetable gardens. (Harold is a wildlife and fisheries professor.)

PRIDE AND BEAUTIFICATION OF MANHATTAN

Venessa Leach 539-7038
Mondays, 7:30pm
First meeting: June 19
Length: Indefinite
Location: City Park Pavillion

Learn through helping to beautify Manhattan. Share your ideas with this already active group on the uses of plant materials throughout Manhattan. This year this group has been working on an historical garden at the historical museum, and is planning to work on a botanical garden at the zoo. Learn through helping to beautify Manhattan. (Venessa has been working at the Manhattan Horticulture Center and organizing community horticulture projects for the past 2 years.)

OPEN HOUSE AT HORTICULTURE RESEARCH FARMS

Extension-Horticulture Department 532-5820
Tuesday and Wednesday, 6pm
Length: 2 days, June 20 and 21
Location: Research Farm, Ashland Bottoms

Welcome to the Horticulture Research Farms Open House. You will learn what new plant varieties are being developed and see various growing methods. The Horticulture Research Farm is located at Ashland Bottoms. Ashland Bottoms is six miles south on McDowell Creek Road, then follow the signs.

*Time passes slowly up here in the mountains
We sit beside bridges and walk beside fountains,
Catch the wild fishes that float through the stream,
Time passes slowly when you're lost in a dream
Bob Dylan*

CHILDREN'S GARDENING

Dick Mattson 532-6170
Saturdays, 10am
First meeting: June 24
Length: Through July
Location: Community Gardens

This will be a class designed to help children raise their own vegetables. Instruction and guidance will be offered for the planting and care of a garden. During the spring, a garden was begun which children may now share in the joy of caring for and harvesting the results. Perhaps we will plant a fall garden. (Dick is a Horticulture professor at KSU.)

DON'T TOSS THOSE ORANGE PEELS -- COMPOST 'EM

Bob Boufford 537-8374
Thursday, 7:30pm
One time, June 29
Location: UFM Banquet Room
1221 Thurston

You can turn your kitchen scraps and lawn clippings into fertilizer and mulch. Composts may be made in a variety of ways using a variety of ingredients. A compost pile will provide a variety of uses for your lawn and garden. Yes, you too may be a composter. Join in the learning techniques of composting. (Bob is a graduate student in Horticulture and has taught several UFM classes.)

FALL VEGETABLE GARDENING

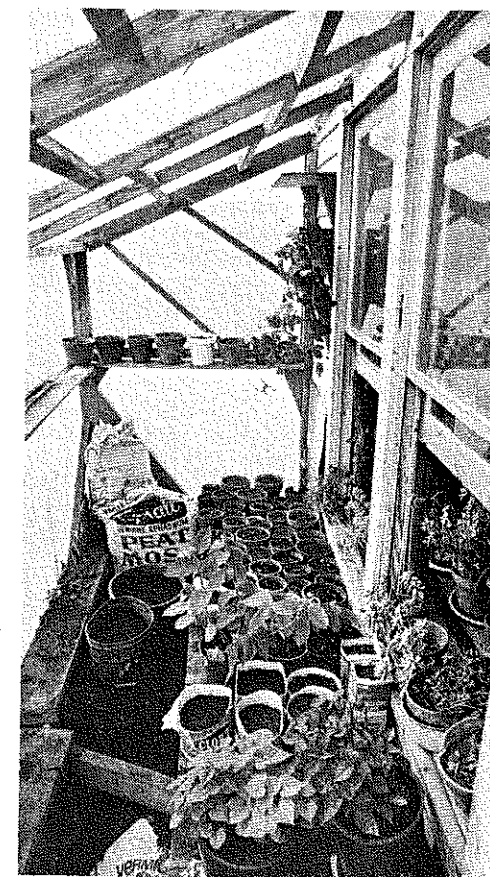
Bill Hoyt 776-7426
Monday, 7pm
One time, June 26
Location: UFM Community Gardens
800 Riley Lane

Yes, vegetables can be grown for fall use and for freezing/canning. Join us in an evening of reviewing what to plant and when, literature hand-outs, and sharing experiences of fall vegetable gardening. Also, bring your extra seeds and let's have a seed exchange so that we may each plant a variety of vegetables. (Bill has been a Horticultural Therapy student at KSU and exhibited an extremely productive vegetable garden last fall.)

FLOWER ARRANGING

Evelyn Bergkamp 532-6170
Wednesday, 7:30pm
One time, June 21
Location: KSU, Waters Hall, Rm 41
Limit: 15
Materials fee: \$5.00 pay at registration

Exploration of various flower designs will be the arrangements of this class. Several basic patterns will be created by each participant. All finished products can be taken home. "Designers" are encouraged to bring their own containers and/or extra flowers. (Evelyn is currently instructing floral design at KSU and has worked in a retail floral shop.)



AN INTIMATE EXPERIENCE OF KNOWING AND GROWING YOUR HOUSE PLANTS

John Paul Bowles 539-7823
Mondays, 7pm
First meeting: June 19
Length: 3 times
Location: UFM Conference Room
1221 Thurston

North, south, east and west, learn which plants grow there best. Fifty new and "used" plants, some for every possible home location, will be discussed. The greening of your home depends on the care your plants are given -- and low care is the key! This course will assist you in gaining the expertise applicable to help you in choosing and maintaining other plants.

(Paul is a plant man at heart. He has owned and operated an indoor plant store and is presently a graduate student and instructor in Horticulture at KSU.)

WORMING CAN BE FUN

George Halazon 532-5840
Monday, 7pm
One time, June 19
Location: KSU, Ackert Hall, Rm 120

Do you want to wiggle your way to profit, improve your soil fertility and raise your own bait? Worms are being raised and used for these purposes as well as food and consumption of wastes. Join us and learn about vermiculture (worm-raising) as well as the many other benefits of worms.
(George is a professor in Wildlife Extension and has taught many other UFM courses.)

BEEKEEPING

Dell Gates 532-6154
Tuesday, Monday, 7pm
First meeting, June 20
Second meeting, June 26
Length: 2 times
Location: KSU, Waters Hall, Rm 127

The fundamentals of what is needed to start an apiary will be demonstrated by showing equipment and a slide show on local hives. Outings might be possible.

(Dell is an Entomology Extension agent.)



HOW TO CARE FOR YOUR DOG AND CAT

Randy Kidd 1-494-2796
Tuesday, 7pm
One time, June 27
Location: UFM Conference Room
1221 Thurston

Do you want to be a responsible pet owner? In addition to feeding and training your cat and dog, this class will help you learn how to keep it healthy. This class will help you begin to recognize symptoms of trouble, and know how to prevent infections and disease.
(Randy is a veterinarian at KSU and a dog and cat enthusiast.)

WILDFLOWER EXPLORATION

Jean Town 532-6101
Thursday, 6pm
One time, June 22
Location: UFM Parking Lot
1221 Thurston

Do you love to see the prairie in full bloom and hike among its beauties? Join Jean in a wildflower stroll during which you will witness and learn to identify the natural garden in our prairie.
(Jean is a teaching assistant in Agronomy and an inquisitive wildflower expert.)

BIRDS - OBSERVATION AND IDENTIFICATION

Neil Schanker 537-7073
You will be contacted
One time
Location: UFM
1221 Thurston

Birds are fun to learn about. Let's travel to some near locations and try to identify and observe birds in their wild habitats. Binoculars and a bird-book are good to have, but not essential.
(Neil has been observing birds for a long time and he claims he still has much to learn.)

DISEASE AND INSECT CONTROL IN HOME GARDENS

Mike Ferguson 539-4395
Monday, 8pm
One time, June 26
Location: UFM Front Lawn
1221 Thurston

This class is open to discussion of organic methods of controlling disease and insects in the home garden. Bring your notebooks and ideas - this will be an information exchange.
(Mike is a research assistant and graduate student in Plant Pathology.)

PLANT DISEASE IN THE HOME GARDEN

Mike Ferguson 539-4395
Tuesday, 8pm
One time, June 20
Location: UFM Front Lawn
1221 Thurston

What diseases are common to your home garden? Do you know how to identify and control them? Most important, how can they be prevented? These questions will be answered, and various types of control discussed, with emphasis on chemical controls.

(Mike is a research assistant and graduate student in Plant Pathology.)

Each of us inevitable
Each of us limitless
Each of us with his or her right upon the earth
Each of us allowed the eternal purpose of the earth
Each of us here as divinely as any is here.
Walt Whitman



If one advances confidently in the direction of his dreams, and endeavors to live the life which he has imagined he will meet with a success unexpected in common hours. In proportion as he simplifies his life the laws of the universe will appear less complex and solitude will not be solitude, nor poverty poverty, nor weakness weakness. Thoreau

89¢ LETTUCE -- FREE FROM THE WILDS

Bob Boufford 537-8374
Wednesdays, 7pm
First meeting: June 21
Length: Indefinite
Location: UFM Basketball Court
1221 Thurston

BICYCLING

Looking for a touring partner, or someone for casual rides on weekends? This class will inform you on how to use all ten speeds, as well as learning new riding techniques. First meeting will include all riders, regardless of experience, to meet each other and plan various group rides. Ride your bike to the meeting for a short group ride afterwards.
(Bob is a mechanic at the Pathfinder, and has had experience in racing, touring, and commuting.)



THE UNIVERSE AND BEYOND

Ted Geisert 532-6786
Tuesdays, 1pm
First meeting: June 20
Length: 3 times
Location: KSU, Cardwell Hall, Planetarium
Limit: 40

June 20 "Getting Acquainted With the Stars"
Introduction to constellations, motions of celestial objects and other every night phenomena about which most of us have wondered, but were too embarrassed to admit it and ask.
June 27 "The Loneliness Factor"
Are we really alone? This program is a search for life beyond earth.
July 11 "Is There Life After Death... for a star?"
This show concerns the evolution and death of stars and what could cause and be the result of the sun's death.

(Ted is a graduate student in Physics and has designed and built his own telescope.)

Self

For questions about Self,
call Melody Williams
at 532-5866.

THE BEST CHOCOLATE CAKE IN THE WORLD CONTEST

Julie Coates 532-5866
Paul Hart

Sunday, 2pm
One time, June 25
Location: UFM Banquet Room
1221 Thurston

Do you have a chocolate cake that people have raved over for years? Then please give the city of Manhattan a chance to rave too. If you wish to be eligible for the contest, sign up at UFM registration. Then bake your about-to-be-famous chocolate cake and bring it to UFM June 25th at 2:00pm. A panel of judges will sample the entries and then award the Grand Prize, dinner for two at Gregov's! The winning cake recipe will be published in the Manhattan Mirror 05/1/013
Enell Foerster (Section II) 537-0977

Section I: Saturday 8am-5pm June 17
Section II: Saturday 8am-5pm July 8

Length: One time
Location: Red Cross Office
208 Poyntz

Limit: 12 each section
Materials fee: \$4.00-\$6.00 pay at class

This is the American Red Cross Instructional System, featuring filmed demonstrations, guided practice sessions, and programmed workbooks. The student is certified as a standard first-aid upon successful completion of the course. There is a fee of \$6 which covers materials, workbooks, and texts. If you have the Red Cross Standard First Aid and Personal Safety Textbook (the blue book), the fee will be \$4. Please indicate which section on the enrollment card.

(All three instructors are certified by the Red Cross.)

CARDIO-PULMONARY RESUSCITATION

Brenda Merryman 532-6516

Tuesday, Wednesday, and Friday, 6-10pm
First meeting: June 20, 21, and 23
Length: 3 times
Location: Red Cross Office
208 Poyntz

Limit: 15
Materials fee: \$1.50 pay at class

CPR is a combination of artificial respiration and artificial circulation. It can save many lives (for instance, if started within 1 minute, it can save 92% of heart attack victims). However, it can cause serious harm if administered improperly. Learn how and earn a Red Cross Certification. The fee covers the book cost.

(Brenda is a certified CPR instructor and an advanced first aid and emergency care instructor.)

BIOFEEDBACK AND STRESS MANAGEMENT

Charlie Griffin 1-485-2762

Thursday, 7pm
One time, June 29
Location: UFM Conference Room
1221 Thurston

Limit: 15

Do you find yourself with clenched jaw or hands, cold fingers, headaches or other uncomfortable responses to stress? We'll look at concepts of stress, its effects on our bodies and health, and methods of managing stress in our lives.
(Charlie operates a local stress management program.)

SHAKTI POWER

Berit Greechie 537-8941

Tuesday, 7:30pm
One time, August 8
Location: UFM Conference Room
1221 Thurston

Limit: 12

The 3HO foundation has developed special techniques for women in the areas of yoga, meditation and nutrition. Through her study of Kundalini yoga Berit has learned of these techniques. She wishes to share them with other women and discuss some of their pros and cons.
(Berit has been teaching Kundalini Yoga for a year.)

CONSCIOUS BODYWORK

Melody Williams 532-5866

Tuesdays, Thursdays, and Sundays, 8am
First meeting: June 20
Length: Continuing
Location: 321 N. 4th
Limit: 6

Most exercises work on physical fitness. These will work as well on the relaxation, balance and peacefulness of the entire being. I will teach you what I know (at various levels of expertise) about yoga, breath work, massage, reflexology and Polarity and Arica exercises. By so doing, I will get to work out in my favorite context, a group. I know most about women, but men are welcome as well.
(Melody has studied body work off and on for five years. She has taught two workshops on body work for women.)

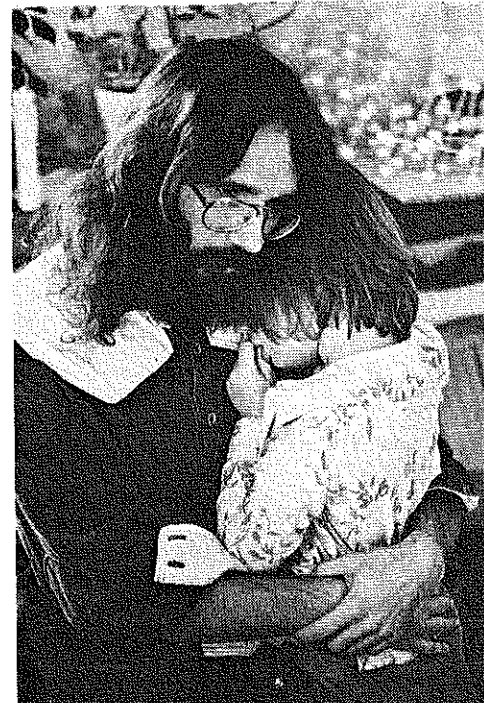
GUIDED AFFECTIVE IMAGERY

Neil Schanker 537-7073

Monday, 7:30pm
One time, July 10
Location: KSU, Union, Rm 205B
Limit: 10

GAI is a technique which expands the imagination and promotes relaxation (sometimes sleep!) for the participants. It involves the "narrator" (Neil) guiding your fantasy-dreams through a story via speech and music. The only participation needed is the desire to relax for a half hour. Bring a blanket and wear comfortable clothes.
(Neil has taken a GAI workshop and has led many groups before.)

Awareness



RATIONAL SELF COUNSELING

Suresh Chandra 776-4976

Tuesdays, 7:30pm
First meeting: June 20
Length: 6 times
Location: 1432 McCain Lane

It is not other people or events that "make" a person unhappy but the view s/he takes of them. In this course we will examine one view of how emotions occur, examine words that elicit strong emotional response, discuss the role of expectations and consider what "rational" means. Finally we will discuss the techniques of Rational Self Analysis (RSA) for changing the emotional habits you want to change. We will draw mainly on the works of Dyer, Maultsby and Ellis for this course.
(Suresh learned Rational Self-Counseling at the Association for Rational Thinking (ART) in Madison, Wisc. and has led this course before for UFM.)

SUMMER FRIENDS (for persons 12-18)

Cathy MacRunnels 537-0844

Tuesdays, 6-8pm
First meeting: June 20
Length: 6 times
Location: UFM Sunshine Room
1221 Thurston

Limit: 12

This is a discussion group session for young people who would like to take some time this summer to get to know themselves and others. We'll listen to some music, talk a lot, and explore the possibilities of the future.
(Cathy has been a facilitator in sociology discussion groups and values clarification workshops.)

CLOWNING

Larry Winter 532-3630

To be announced

Larry will help you get started in developing a clown character and a name. You will also learn to apply make-up and design your own clownface.
(Larry learned to clown several years ago from Larry Birdsell.)

JOURNAL WRITING

Rev. David Nelson 539-8181

Thursday, 12noon
One time, July 27
Location: UFM Basement
1221 Thurston

At this meeting, those of us who use journals as tools for self development and social criticism wish to share ideas and resources with other journal writers. Plans will be laid for teaching new journal writers in a fall UFM class.
(David is pastor at Peace Lutheran Church)

SO YOU'VE HAD A MASTECTOMY TOO

Jo Tranter 539-7708

Thursdays, 7:30pm
First meeting: June 29
Length: 3 times
Location: 844 Church

We will give hints on clothing, surgical forms and their cost. Time will be given to exploring your feelings about it all. If you have questions or want to talk personally, please feel free to call.
(Jo had a mastectomy a number of years ago and is a lifetime Manhattan resident.)

Women's Center

These classes are offered by members or friends of the Women's Center of Manhattan, a new clearinghouse for community issues related to women. In mid-summer, the center will relocate. You are welcome to be a member of the center. For information, call Meg Mathewson at 539-4176.

WOMEN'S ISSUES - EVERYBODY'S BUSINESS

Charlotte L. Edelman 539-2624

Wednesdays, 7pm
Fridays, 5:30pm
First meeting: May 31
Length: 13 shows
Location: Cable Channel 6

This TV series will focus upon women in Manhattan-their needs and concerns. Each show will deal with a special problem that women face in today's world. We will explore possible solutions and sources of help and support available in our community. Watch the show for announcements of discussion formats for viewer input.
(Charlotte is a member of the Women's Center of Manhattan and has been interested in women's issues for a long time.)



ALTERNATIVES IN CHILDBIRTH

Jeri McDonald 537-8133
 Alternate Tuesdays, 7:30pm
 First meeting: June 20
 Length: 4 times
 Location: Women's Center of Manhattan
 611 Poyntz

This discussion group will explore family centered maternity care, birth centers, home birth and other childbirth alternatives being practiced across the country. We will also take a look at options being offered in the local area.
 (Jeri is a member of the Committee on Women's Health formed after Suzanne Arms' speech last semester.)

EDUCATIONAL OPPORTUNITIES FOR ADULTS

Bobbie Flaherty 532-5686
 Friday, 10am-12noon
 One time, June 23
 Location: Public Library
 Juliette and Poyntz

We will discuss current educational opportunities and alternatives available to adults. People with prior college work should bring copies of previous transcripts if they have questions regarding applicability to KSU degree programs. Everyone should bring a list of prior learning experiences, both formal and informal (i.e. girl scout leader, volunteer, homemaker, employment, etc.) for consideration and discussion on obtaining college credit for prior learning.
 (Bobbie is employed at KSU as an advisor to adult students in the Non-traditional Study Program.)

RAPE! AND OTHER VIOLENCE TOWARD WOMEN

Diane Rausch 537-1712
 Monday, 7:30pm
 One time, June 26
 Location: Women's Center of Manhattan
 611 Poyntz
 Limit: 30

Rape, spouse assault and sexual harassment on the job derive from surprisingly similar attitudes. Those interested in combatting all of these assaults should join Diane and members of the Women's Center of Manhattan for serious discussion and enlightenment.
 (Diane is currently the Director of Affirmative Action at KSU and is particularly involved with combatting campus rape and sex discrimination.)

BOOKS BY AND ABOUT WOMEN

Jennifer Gold
 Joan Brashears 776-7897
 Tuesdays, 7:30pm
 First meeting: June 20
 Length: Indefinite
 Location: 321 N. 4th

We would like to get together this summer to discuss books related to women. One possibility would include Of Woman Born, by Adrienne Rich, or others suggested by participants. A book list will be offered to help us begin. We'll meet at one another's homes.
 (Joan and Jennifer are members of the Women's Center of Manhattan.)

WOMEN AND WORK

Pamela Johnston
 Meg Mathewson 539-4176
 Thursday, 7:30pm-9:30pm
 One time, July 13
 Location: First Congregational Church
 Juliette and Poyntz
 Limit: 25

Pam and Meg will host an exchange of ideas between women in the work force, women in career transition and women entering professional employment for the first time. Referrals for career counseling, educational advisement and advice on how to file formal and informal complaints will be available.
 (Pam works with the Kansas Commission on Civil Rights and Meg is a member of the Women's Center of Manhattan.)

WOMEN!!!

Jennifer Gold
 Sundays, 1-4pm
 First meeting: June 18
 Length: Continuing
 Location: UFM Conference Room
 1221 Thurston

This is a discussion group for women of any age who are interested in changing; who are dissatisfied; who would like support in making changes or challenging existing ideals. Some possible ideas include assertiveness, being alone, defining goals, relationships, sex and sex roles, and women-oriented lifestyles.
 (Jennifer has been exploring this topic and changing her own life for several years now.)

BECOMING SINGLE WOMEN

Marianne Adams 537-9650
 Mondays, 7:30pm
 First meeting: June 19
 Length: 7 times
 Location: 1311 Houston

This is a support group for women going through the divorce process. Special topics will be addressed (i.e. emotions, legal issues, finances, children, career planning.) Resource people will be made available according to the needs of members. Old Members are welcome to re-register. The group may opt to continue.
 (Marianne holds a master's degree in counseling. She led this group last semester following her own divorce.)

Spirit

BODY, MIND, AND SOUL

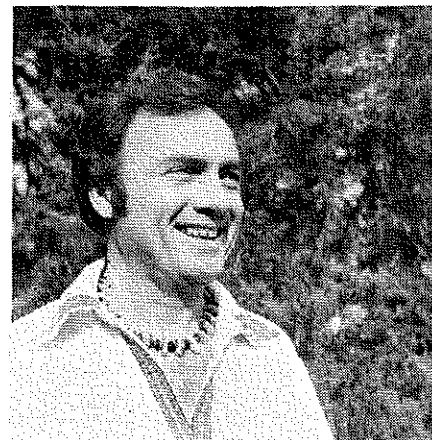
Janis Stenger 1-456-2553
 Wednesdays, 8-10pm
 First meeting: July 5
 Length: 6 times
 Location: KSU, Eisenhower Hall, Rm 201

Janis and other lecturers will cover dreams, reincarnation, karma, astrology, religion and the evils of witchcraft. There will be the opportunity for group discussion and sharing of experiences.
 (Janis studied with various teachers in this area for 10 years. Most recently she's studied with the Summit Lighthouse.)

UMHE SERIES

Each semester, the staff of United Ministries in Higher Education offers a set of weekly discussions on various issues. All will meet at UMHE Center, 1021 Denison. All are coordinated this semester by Rev. Jim Lackey and begin the week of June 11. For more information, you may call 539-4281. UMHE will soon be known as Ecumenical Campus Ministries.

- Sundays, 5:30pm - "Issues in the Relationships between Religion and Ethics"
- Mondays, noon - Luncheon and Book Study of Thomas Merton on Mysticism and Zen Masters
- Tuesdays, noon - Luncheon and Book Study of Vine Deloria on God is Red
- Tuesdays, 7:30pm - Book Study of Hyemeyohsts Storm's Seven Arrows
- Wednesdays, 7:30pm - Discussion on the Purpose In/To Life
- Thursdays, 7:30pm - Discussion of the following:
 USA/American Indian Treaties;
 Afghanistan; Palestinians; Rhodesia;
 Zionism; Political Prisoners and
 Amnesty International
- Fridays, noon - Luncheon discussion of transcendence, the unconscious, and the spirit.



MEET THE MORMONS

David Gowdy 537-8839
 Wednesdays, 7pm
 First meeting: June 21
 Length: Continuing
 Location: LDS Institute
 1820 Claflin

These classes are held to introduce the concepts and philosophy of the Latter Day Saints Church to interested townspeople and students.
 (David is the Mission Coordinator with the KSU branch of the Mormon Church.)

*For everything there is a season, and a time
 for every matter under heaven;
 A time to be born, a time to die....
 A time to break down, and a time to build up....
 A time to seek, and a time to loose....
 Ecclesiastes 3:1-10*

ON BECOMING A MUSICAL MYSTICAL BEAR- SPIRITUALITY AMERICAN STYLE

Rev. David Nelson 539-8181
 Tuesdays, 12noon
 First meeting: July 18
 Length: 5 times
 Location: UFM Basement
 1221 Thurston
 Materials fee: \$2.50 pay at registration

Reading and discussing this book by Matthew Fox will challenge us to take a new look at prayer. The author suggests that prayer is a radical response to life; not to God or to culture, but to life. He argues that we must not separate mysticism from prophecy, but that both are part of this radical response. Participants will be expected to read the book, (the book will be covered by the fee.) Bring a bag lunch.
 (David is pastor at Peace Lutheran Church.)

BEING FAITHFUL: ENGAGING THE POWERS

Rev. David Fly 537-0593
 Wednesday, 7:30-9:30pm
 One time, June 21
 Location: Baptist Campus Center
 1801 Anderson

This group discussion, with the help of a taped seminar, will deal with the issue of a person's faith and life within the academic institution. The taped participants include the Rev. Will Campbell, a southern minister; Arthur Green, a rabbi, Sheila Collins, a poet, essayist and feminist; and William Stringfellow, an attorney, theologian and social critic.
 (David is Episcopal Chaplain at KSU.)

We can never be really prepared for that which is wholly new. We have to adjust ourselves, and every radical adjustment is a crisis in self-esteem; we undergo a test, we have to prove ourselves. It needs inordinate self-confidence to face drastic change without inner trembling. Eric Hoffer

Skills

**For questions about Skills,
call Tom Hollinberger
at 532-5866.**

INTRO TO TOOLS

George Sellens 539-5655

Monday and Wednesday, 7:30pm
First meeting: July 10 and 12
Length: 2 times
Location: UFM Fireplace Room
1221 Thurston

Learn how to operate, identify, and maintain common household tools such as saws, hammers, screwdrivers, etc.
(George has assisted in the rehab of the UFM house. He has had 30 years experience at polishing a desk top with both shirt and coat sleeves.)

REFINISHING MADE EASY: REMOVING THE CONFUSION

Nick Penland 537-8153

Section I: Thursday 8pm June 22
Section II: Thursday 8pm June 29
Length: One time
Location: UFM Banquet Room
1221 Thurston
Limit: 15 each section

Nick will cover the basics of furniture refinishing and repair as well as going over veneering. He will also be glad to help folks find any equipment, tools, replacement parts, etc., that they might need. Please bring old tarps and newspapers. Indicate which section you want to be in at registration.
(Nick is a cabinetmaker who has been refinishing furniture for seven years.)

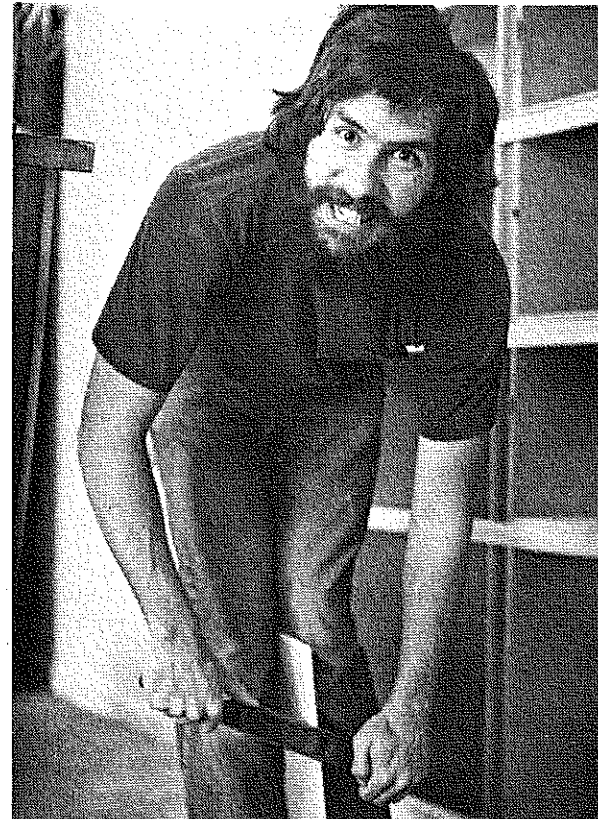
BASIC HOUSE WIRING

Richard Napper 539-6973

Section I: Wednesdays 8pm June 21
Section II: Fridays 8pm June 23
Length: 4 times
Location: 811 Osage
Limit: 20
Materials fee: \$2.00, pay at class

This course will cover the tools and test equipment needed for a homeowner to service and repair live house wiring. Richard will teach folks the proper way to add additional wiring to their houses. Students should bring their own chairs.

(Richard is an electrical engineer and a master electrician who owns his own electrical contracting business.)



It's this simple: If I never try anything, I never learn anything. If I never take a risk, I stay where I am -- Hugh Prather

THE TUBE

Richard Napper 539-6973

Tuesday, 8pm
One time, June 27
Location: 811 Osage
Limit: 20

The topics of this course will be: consumer tips for buying a good tv (color, b/w), basic preventive care for televisions to keep them running, and how to find reliable service to get them running again. Participants should bring their own chairs.
(Richard is well acquainted with electronics and also teaches UFM's basic house wiring course.)

STEREO FOR HOME AND CAR

Mel Strait 532-6459

Thursday, 7:30pm
One time, July 6
Location: UFM Conference Room
1221 Thurston
Limit: 12

This course compares equipment in terms of price and quality. We will explore home and car stereo units and will learn how to choose and install them. We will also hear from several speakers.
(Mel knows his stuff when it comes to stereos.)

HOW TO WRECK YOUR MOTORCYCLE

Richard Harris 539-5264

Saturday, 2:30pm
One time, July 8
Location: Tuttle Creek Overflow
Spillway Motorcycle Area

This course is concerned with the fact that most riders don't know how to take a spill correctly; an important skill on both street or dirt bikes. (Richard runs two motorcycle shops in Manhattan, has taught UFM Cycle Maintenance courses, and has broken both legs and an arm at least once.)

BBQ PITS AND MASONRY PROJECTS

Eldon Bergstrom 776-8574

Saturdays, 9:30am-12noon
First meeting: July 1
Length: 2 times
Location: To be announced

To introduce masonry skills needed to build a BBQ pit and other home projects, Eldon will first discuss the formulas for mixing concrete for various uses and the theory behind formwork with concrete patio tips. The second Saturday will be spent constructing a BBQ pit or small masonry project.
(Eldon has 28 years of experience under his belt and has worked on every campus building since Ahearn Fieldhouse.)

INTERIOR DESIGN: APPLICATION FOR YOUR HOME

Evelyn Knowles 532-6993

Monday and Wednesday, 7-9pm
First meeting: June 26 and 28
Length: 2 times
Location: KSU, Justin Hall, Rm 349
Limit: 20

This class will cover some of the basics of interior design, including color, materials, furnishing, and arrangements for your home or office. Slides and films will be presented to illustrate these concepts. Bring your own questions and problems to be tackled in class.
(Evelyn has taught interior design studio in the college of Home Economics at KSU.)

BICYCLE REPAIR

Bill Jacoby 537-1510

Tuesdays, 7pm
First meeting: June 20
Length: Indefinite
Location: Bill's Bike shop
1207-A Moro
Limit: 25

We will be teaching the fundamentals of bicycle care and repair. This class will decide its own direction and how to make the most effective use of time.
(Bill owns his own bike shop and has taught this class for several years.)

A PRETTIER YOU

Beverly Ines 1-494-2494

Tuesdays, 7pm
Length: 2 times
First meeting: June 20
Location: UFM Conference Room
1221 Thurston
Limit: 20

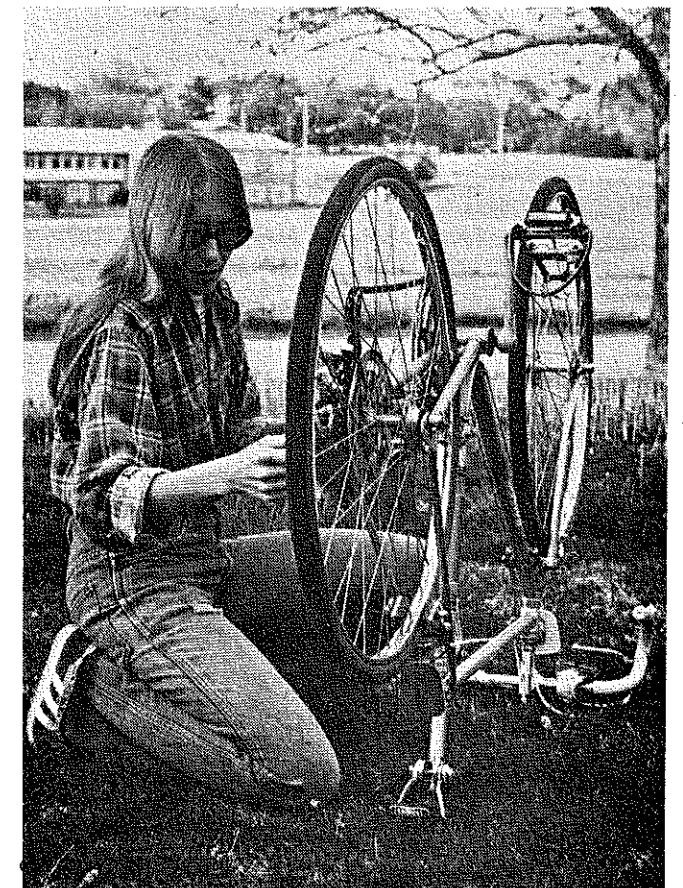
Learn how to achieve and maintain a more lovely complexion through basic knowledge of proper skin care. At the second session, Beverly will demonstrate how to select make-up shades and correctly apply make-up for a look of natural beauty. Many tips and exciting new ideas will be introduced to you!
(Beverly has been a professional beauty consultant for the past six years.)

HAIR

Rick McClanahan 776-5222

Monday, 11am
One time, June 26
Location: The Professional Building
404 Humboldt
Limit: 20

In this class we will discuss how to test products at home, and learn how to tell whether or not products are beneficial, determine why hair is in bad condition, understand the use of conditioners and learn about haircare in general. There will also be a demonstration on makeup.
(Rick is a Manhattan hairstylist who has led this class many times.)



DARN THOSE SOCKS!

Verda Clagett 776-8594
Wednesday, 7:30pm
One time, July 5
Location: 300 N. 5th, Apt. 11F
Limit: 10

Socks today are both beautiful and expensive, but even beautiful things become worn. Verda will show you the age old art of darning those holes in your wool hiking socks or those argyles! Bring a darning needle, a sock with problems, and matching darning cotton or wool. By using the same technique, you can mend holes in slacks and sweaters. (Verda has been sewing for 61 (wow!) years, since she was twelve years old.)

MICROCOMPUTER COOPERATIVE

Bob Kirk 539-8484
Mondays, 8pm
First meeting: June 19
Length: Indefinite
Location: Front steps of Seaton Hall

Are there 8-10 people in town who can't afford even \$500 for a purely personal computer? Here's a chance to buy at dealer price: North Star Z-80 box Minifloppies, 16-32K, etc. Anybody for a H-11? How could we share one system like the Flying Club shares an aircraft? (In the interest of making more and different hardware/software available also see "Micros for the Masses" in this section.)

MICROS FOR THE MASSES

Phillip C. Reed 532-6300
Wednesdays, to be announced
First meeting: June 21
Length: Indefinite
Location: KSU, Fairchild Hall, Rm 202

Microcomputers beyond Reader's Digest..? This group is for anyone who owns or is interested in micro-computers. Three-weeks-per-month is the meeting sequence which will cover hardware (circuits), software (programming), general topics, and eventually designing and building a system. I promise that this is easier than it sounds. There are micros available to us now. (Phil has been at this for over 5 years as an EE major.)

INVESTMENT BASICS

Kraig Hansen 537-0594
Tuesdays and Thursdays, 7-9pm
First meeting: June 20,22,27,29
Length: 4 times
Location: KSU, Eisenhower Hall, Rm 21

Back by popular demand, Kraig will give you a basic but thorough survey of the securities industry, how it functions, and how you can get involved in it. He will discuss stocks, bonds, and other investment vehicles. (Kraig is a local broker with an investment firm holding membership in the New York Stock Exchange, Inc.)

THE ART OF GRANTSMANSHIP

John Murry 532-6194
Monday, 7:30pm
One time, July 10
Location: KSU, Union, Rm 205 a

With the ongoing tightening of the economy, there is a significant need to know about alternative sources of income. Grants are a possible source of funds and this session is designed as an introduction to the vast field of grants and federal contracts. The meeting is open to anyone who wishes to attend and the thrust will be to review the many sources available for identifying potential federal, foundation, and state support for various projects. (John is the accepted campus expert on grant preparation and execution.)

COLLEGE CREDIT WHERE CREDIT IS DUE

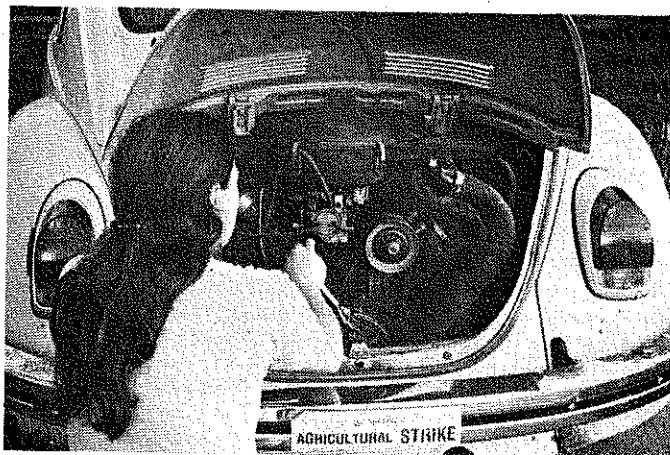
John Steffan 532-5686
Wednesdays, 7:30pm
First meeting: June 28
Length: 2 times
Location: KSU, Umberger Hall, Rm 315

This is a "how to" course on building portfolios which document non-sponsored (life experience) learning for presentation to college faculty members who might award credit. It includes some background on the Non-Traditional Study Program at KSU. We'll start building portfolios the first week, and look them over the second week. (John is the director of the Non-Traditional Study Program at KSU.)

PUBLICITY ON A LOW BUDGET

Cornell Mayfield 537-0056
Wednesday, 7pm
One time, June 28
Location: UFM Conference Room
1221 Thurston

This course is designed especially for church groups, non-profit organizations, and other folks with limited publicity budgets, who still want community-wide exposure for their projects. Cornell will touch on the basics of advertising communications and discuss local ways to make yourself and your project known to the public. (Cornell is the city human development coordinator.)



INSURANCE PRIMER

Mark Weddle 539-4709
Mondays, 7:30pm
One time, July 17
Location: KSU, Union, Rm 206A

All lines of personal and casualty insurance will be explained and discussed. Emphasis will be on the most commonly used lines of insurance such as homeowners, renters, automobile, health, disability, income and life. We'll discuss the role of the agent in helping you choose the proper coverage for your needs. (Mark is a local insurance agent.)

HOW TO BE ARRESTED

Pat Caffey
Mary Winter
Tuesday, 8pm
One time, June 20
Location: UFM Fireplace Room
1221 Thurston

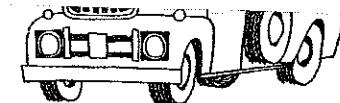
Most people are unaware of the processing a person goes through if they are arrested. Nor do most people realize their rights or the consequences in the law enforcement process. These issues will be addressed while looking from the professional viewpoint at arrest procedures, court proceedings, and probation. (Pat is a local lawyer and Mary is a probation officer.)

SIGN LANGUAGE RETREAT

Wendy Schiappa 537-0905
Weekend to be announced
One time, Overnight
Location: Tuttle Creek

A retreat is being planned between the Flying Hands Club of Johnson County College and local folks interested in exposure to deaf people. Communicating and practicing sign language will be facilitated at this campout. (Wendy has taught sign language at UFM for several years.)

WOMEN AND WORK
Women !!!
Single Women



Page 33

Body, Mind and Soul
UMHE Series
Meet the Mormons
Musical Mystical Bear
Being Faithful

Page 35

Motorcycle Wrecking
BBQ Pits
Interior Design
Bicycle Repair
Prettier You
Hair

Page 36

Darn Socks
Microcomputer
Micros for the Masses
Investment Basics
Grantsmanship
College Credit
Publicity

Page 37

Insurance
How to be Arrested
Sign Language
Energy Conservation
Energy Overview



give us not bunches of flowers -
planted, pruned and plucked by you in all your wisdom.
rather, the seeds that we may grow our own.



she was twelve years old.)

MICROCOMPUTER COOPERATIVE

Bob Kirk 539-8484
 Mondays, 8pm
 First meeting: June 19
 Length: Indefinite
 Location: Front steps of Seaton Hall

Are there 8-10 people in town who can't afford even \$500 for a purely personal computer? Here's a chance to buy at dealer price: North Star Z-80 box Minifloppies, 16-32K, etc. Anybody for a H-11? How could we share one system like the Flying Club shares an aircraft?
 (In the interest of making more and different hardware/software available also see "Micros for the Masses" in this section.)

MICROS FOR THE MASSES

Phillip C. Reed 532-6300
 Wednesdays, to be announced
 First meeting: June 21
 Length: Indefinite
 Location: KSU, Fairchild Hall, Rm 202

Microcomputers beyond Reader's Digest...? This group is for anyone who owns or is interested in micro-
 NAACP Film Series

Page 7
 Black History
 Manhattan History
 Intro to Genealogy
 Estate Planning
 Historical Survey
 Ecology Corporation

Page 8
 Living Learning School
 Open House
 Returning to College
 Big Brothers/Big Sisters

Page 9
 AGING SERIES
 Aging Aren't We All
 Creative Writing
 Fun and Games
 Consumer Fraud
 Look Your Best
 Sing Along with Frank
 A Pet Show

Page 12
 Drying Flowers
 Candlemaking
 UFM Coop Pottery
 Pottery for Tweens
 Throwing on the Wheel
 Primitive Pottery

Page 13
 Ceramics
 Creative Pottery
 Kiln Building
 Handbuilding with Clay



Index

Fine Arts

Page 14
 Keepsake Clothing
 History on Tour
 Poetry
 Manhattan Artist Pool
 Anne Sexton and Sylvia
 Plath
 Calligraphy

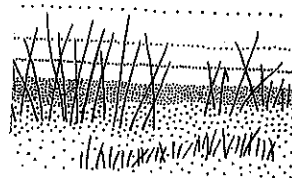
Page 15
 Art With Children
 Watercolor Painting
 Rosemaling
 Woodwind Ensemble
 Beginning Guitar
 with Mike

Page 16
 Beginning Guitar
 with Mel
 Advanced Guitar
 Musical Instrument
 Maintenance
 Belly Dancing IV
 Ancient Art of Belly-
 Dance

Page 17
 Photographers Share
 Photography
 Stained Glass Demo
 Ukrainian Eggs

Earth

Page 18
 Wake up Sundial
 Climbing in Kansas
 Grand Canyon Trip
 Buying Country Property
 Independence with Land



Page 19
 Manhattan PRIDE
 Horticulture Open House
 Children's Gardening
 Orange Peel Compost
 Fall Gardening
 Flower Arranging

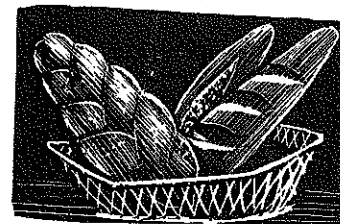
Page 20
 House Plants
 Worming
 Beekeeping
 Dog and Cat
 Wildflower
 Birds
 Disease and Insect
 Control
 Plant Disease

Page 21
 89¢ Lettuce
 Woody Plant Material
 Universe and Beyond
 Basic Horseshoeing

Foods

Page 22
 Best Chocolate Cake
 Baklava
 Joy of Crepes
 Soufflés Return

Page 23
 Summer Quiche
 Sourdough Cooking
 Cinnamon Rolls
 Homegrown Bread
 Chinese Cooking
 Backpack Cooking



Page 24
 Drying Food
 Cake Decorating
 Cheesecake
 Cooking With Herbs
 Cheese Tasting
 Feasting from Wilds

Page 25
 Greasy Spoon
 Microwave Cooking
 Sprouts
 Bartending
 Nutrition and Pregnancy
 Historic Dining

Play

Page 26
 UFM's Building Project
 Dial a Partner
 Playtime for Kids
 Outing Club
 Adult Games

Page 27
 Fat and Dieting
 Canoeing in Kansas
 Bicycling
 Children's Tumbling
 Camping for Kids
 Aerobic Dance
 Dungeons and Dragons
 Wargaming

Page 28
 Frisbee Wizards
 Model Airplanes
 Co-Rec Volleyball
 Racketball
 Potluck Volleyball
 Soccer
 Beginning Tennis
 Tennis for Fun



Page 29
 Handball
 Beginning Scuba
 Beginning Swimming
 Preschool Swimming
 Adult Swimming
 Advanced Swimming

Self

Page 30
 First Aid
 CPR
 Biofeedback
 Shakti
 Conscious Bodywork
 Guided Imagery



Page 31
 Rational Self-Counseling
 Summer Friends
 Journal Writing
 Mastectomy
 Women's Issues TV Show
 Clowning

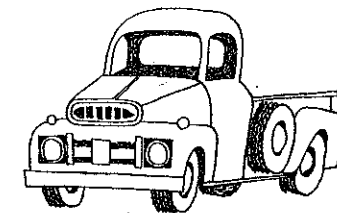
Page 32
 Childbirth Alternatives
 Adult Oppor. in Ed.
 Rape
 Women's Books
 Women and Work
 Women !!!
 Single Women

Page 33
 Body, Mind and Soul
 UMHE Series
 Meet the Mormons
 Musical Mystical Bear
 Being Faithful



Skills

Page 34
 Intro to Tools
 Refinishing
 House Wiring
 The Tube
 Stereo



Page 35
 Motorcycle Wrecking
 BBQ Pits
 Interior Design
 Bicycle Repair
 Prettier You
 Hair

Page 36
 Darn Socks
 Microcomputer
 Micros for the Masses
 Investment Basics
 Grantsmanship
 College Credit
 Publicity

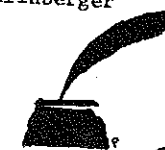
Page 37
 Insurance
 How to be Arrested
 Sign Language
 Energy Conservation
 Energy Overview

Thank You

To all the folks below from whom we scrounged photos in the middle of the night and didn't yell at us too much -- thanks a bunch! And a special thank you to the staff of FLINT who graciously did our typesetting.

Cover: David Von Riesen
 Tom Leopold: pages 4, 6, 8, 10, 12, 13, 15, 16, 18, 19, 21, 26, 29, 37.
 Sue Sandmeyer: pages 3, 17, 31, 35, 36.
 Teena Hosey: pages 11, 17, 22, 23, 24, 25, 34.
 Dorothy Koepsel: page 32
 Jean Goldman: page 13

Layout Crew: Teena Hosey and Tom Hollinberger

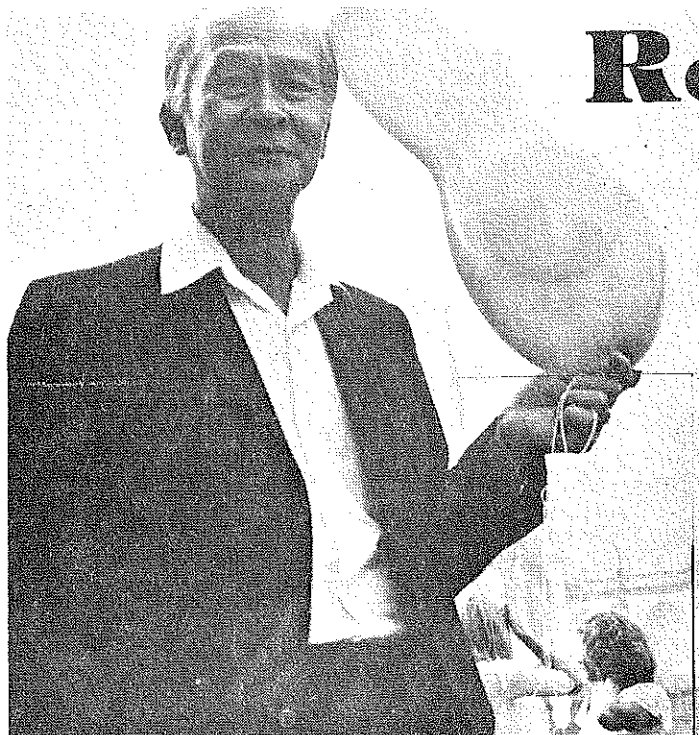


Outreach

Unive. Man's State Outreach Program is set up to provide technical and training assistance to any community or group in Kansas that would like to establish a free university-community education project. The response to this service has been excellent and we are working with some 22 programs in the state. We hope this number will be over 30 by the end of 1979.

The technical and training assistance involves helping to start new programs, establishing advisory boards, how to design and layout brochures, writing proposals, and many other activities. The State Outreach Staff publishes a monthly newsletter which is sent to all projects and other friends; a quarterly magazine newsletter is published for widespread distribution and this spring a Kansas Community Education Manual was published for anyone interested in such projects.

New programs in 1977-78 include: Olsburg, West Cherryvale, Pittsburg, Milford, and Meade. I like some more information on these activities call the State Outreach Program at 532-5866



Registration

June 14 and 15 - KSU Union, 9am to 4pm.
June 14 - Manhattan Public Library, 9am to 7pm.
June 14 - Douglass Community Center Annex, 11am to 1pm.
June 14 - UFM House, 1221 Thurston, 7am to 12 noon.

If it is impossible for you to register at one of the above locations, you may call 532-5866 during the following hours only: 9am to 5pm, both days. Please limit registration by phone to four classes.

REGISTRATION IS IMPORTANT. It allows leaders to prepare the proper number of handouts, order supplies, reserve enough room space, and contact you if there is a change in the class. If you register for a class with limited enrollment and find you cannot attend, it is crucial that you contact the leader so that persons on the waiting list can be allowed to join the group.

In response to your always welcome suggestions, we have made a few changes in registration procedures. You may only register for yourself and one friend in a limited class. Classes with fees will be placed together at a separate table in the union. We have expanded hours at the UFM house to be more accessible to those working early hours. The registration card has been redesigned for better recordkeeping.

You can help speed up registration and reduce frustration if you register only for classes you are sure you can attend. Check your calendar before registration. Class fees must be paid by the end of the day on which you register. Bookkeeping is involved with fee classes, and suppliers may have been already purchased, please do not expect to receive a refund if you decide you cannot attend. We hope again that you will feel free to give us feedback on the registration process at

on if you register only for classes you are sure you can attend. Check your calendar before registration. Class fees must be paid by the end of the day on which you register. Bookkeeping is involved with fee classes, and suppliers may have been already purchased, please do not expect to receive a refund if you decide you cannot attend. We hope again that you will feel free to

UFM
1221 Thurston
Manhattan, KS

yes-Weavers Fair

POSTAGE JULY 0 2

Microcosm Free University
1417 Grant Street
Berkeley, CA 94703

Microcosm Free University
1417 Grant Street
Berkeley, CA 94703
KANSAS STATE UNIVERSITY
NOT DELIVERABLE
AS ADDRESSED
UNABLE TO FORWARD
RETURNED TO SENDER
KATE
170
return postage guaranteed